



UST

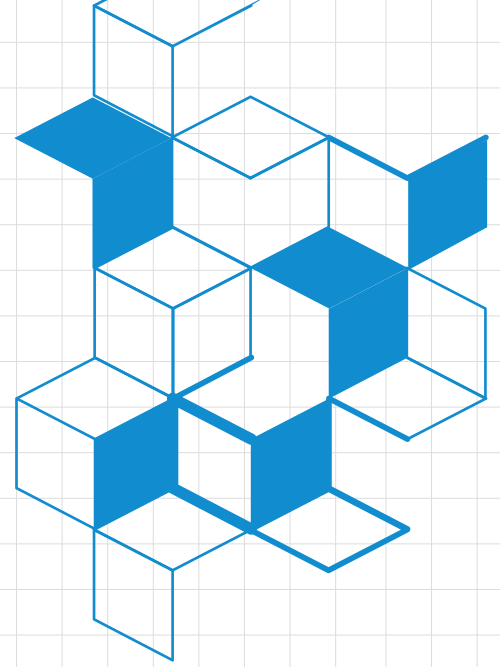
Fall semester 2014

Spring semester 2015

Admission Guide

for Special Admission-Foreigners,
Koreans Living Overseas

March 2014



Contents

1. Introduction of UST
2. Achievements Excellence of UST
3. High standards of student support
4. Admission Plan for Special Admission-
Foreigners, Koreans Living Overseas
(Fall semester 2014, Spring semester 2015)
5. The Major List of
Admission Plan of each Campus
 - Admission in Fall, 2014-Foreigners
 - Admission in Fall, 2014-Koreans Living Overseas
 - Admission in Spring, 2015-Foreigners
 - Admission in Spring, 2015-Koreans Living Overseas

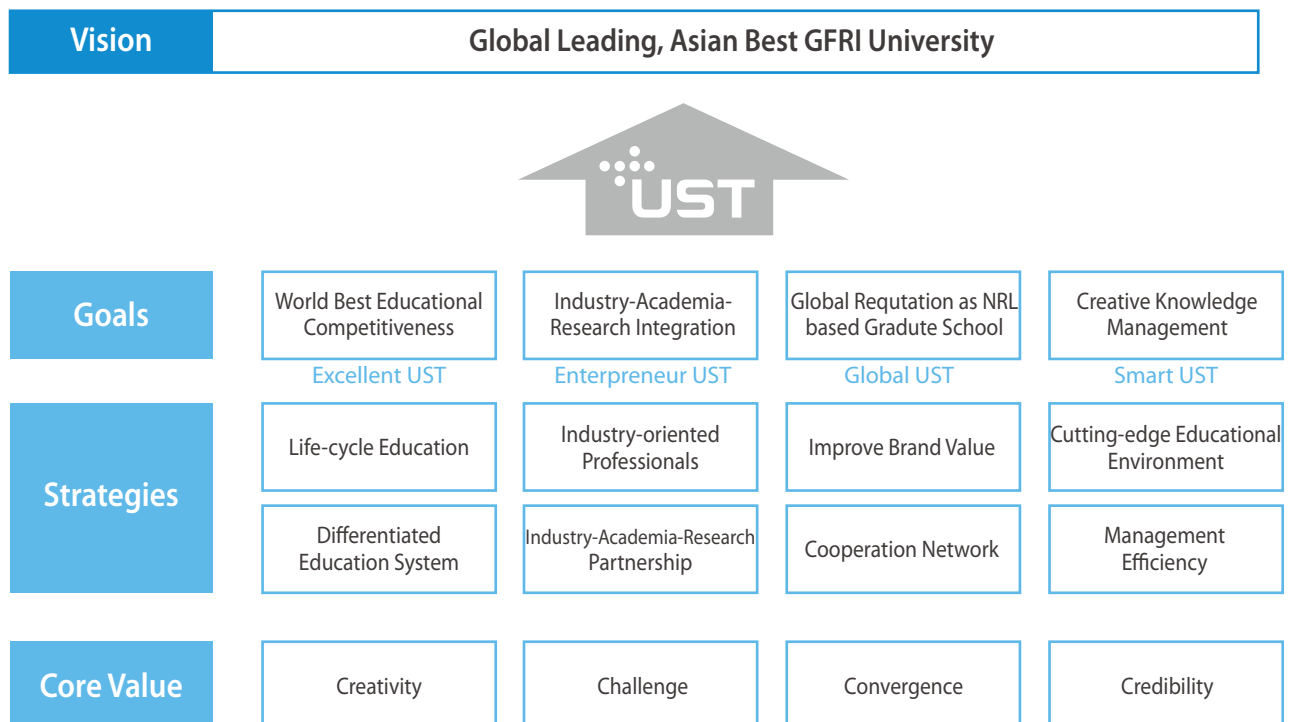
Introduction of UST

Purpose of Establishment

- Differentiated from other science and engineering educational institutes through R&D field-oriented education
 - Fostering of master's and doctoral degree holders in new fields of convergence technology
- Playing an educational role in the fields of science and technology of government-funded research institutes
 - Active utilization of outstanding research personnel, advanced facilities and equipment of government-funded research institutes
- Cultivation of creative science and technology professionals capable of working immediately in industrial and research fields

Establishment Background

- Article 33-1 (Establishment of Graduate Schools and Universities) of the Act on the Establishment, Operation, and Fostering of Government-invested Research Institutions in Science and Technology
 - As a research and educational institute under the jurisdiction of the Ministry of Science, ICT and Future Planning, UST is a field-oriented graduate school focusing on the cultivation of master's and doctoral degree holders in science and technology



Welcome from President



UST offers an ecosystem for human resource development in Science and Technology

Today we are living in a time of unprecedented changes in knowledge system which is characterized by explosion of new knowledge and information with fast shortening life cycle. The conflicts surrounding intellectual property among advanced companies hint at the start of a new intellectual world war. Under such dynamic knowledge system, one can develop creative breakthroughs only by transcending the boundaries of disciplines for interdisciplinary communication and convergence. UST was created to train and nurture global research scientists and engineers who can respond to the needs of the 21st century through interdisciplinary communications and convergence. UST was created to train and nurture global research scientists and engineers who can respond to the needs of the 21st century through interdisciplinary communications and convergence.



UST was founded in 2003 jointly by 30 government-funded R&D institutes as an institution of advanced education in science and engineering directly linked to research and development activities. Despite the short history, the UST graduate program proved very effective as evidenced by the scientific quality of its graduates. UST students have published high quality scientific papers in various areas in the world top journals, such as Nature, Science, and others. As such, UST promises to grow as a world class university specialized in on-site research education.

Such an achievement has been made possible by the combination of the educational programs of UST and the excellent research scientists and engineers as well as the superb research facilities and systems of government-funded R&D institutes which constitute the faculty of UST. UST provides students with not only top-level research mentors but also excellent environments, in which students can engage in creative research and development.

Based on the achievement, UST is now preparing for a take-off for another transition. we are working on a Mid-Long Term Development Plan toward the year 2025. while at the same time, upgrading the academic programs, which will set a direction for the development of UST as a model institute for academic-research-industry collaboration.

UST will focus more on improving the quality of education and thus the quality of graduates as scientists and engineers. Our effort are geared to an ecosystem that can attract top talents from around the world by continuously innovating curricula and upgrading research facilities and environments, while at the same time, expanding networks for research and education. we aim to equip young scientists and engineers with not only intelligence and creativity but also the spirit of risk-taking, on the basis of which they can generate new knowledge and values and meet the challenges facing the human society.

UST provides opportunities to interact with top-level scientists and engineers with various backgrounds as well as to participate in in-depth research in diverse areas. UST is a home to professors and students who aspire to create a new future and will always be open to those who want to realize their scientific potential.

Thank you

Lee, Un Woo Ph.D.
President of University of Science & Technology

History of UST

History of UST

- Dec 18, 2002 Revision of the law for the establishment of UST(by National Assembly Members)
- Oct. 22, 2003 Approval of the establishment of the UST(by the Ministry of Education & Human Resources Development)
- Mar. 03, 2004 The 1st entrance ceremony
- Sep. 23, 2004 Revision of the relevant law
- Feb. 17, 2006 The 1st commencement
- Feb. 29, 2008 Jurisdiction transfer from the ministry of science and technology to the Ministry of Education, Science, and Technology
- Dec. 03, 2010 Completion of the UST Headquarters
- Dec. 07, 2011 The inauguration of the 3rd President, Lee Un Woo
- Mar. 23, 2013 Jurisdiction transfer from the Ministry of Education, Science, and Technology to Ministry of Science, ICT and Future Planning
- Feb. 14, 2014 The 17th Commencement Ceremony

Achievements Excellence of UST

UST Students publish their paper as the **first authors** in **Nature**, **Science**, **cell** and other journals

Exploring generation of hydrogen and energy by microorganism in deep sea published in **Nature**, Sep. 16, 2010.

- Bae, ○○(Marine Biotechnology, KIOST Campus)
- Verified for the first time that organism can produce self energy along with hydrogen in their paper.



Verifying new functions of non-neural cell in brain published in **Science**, Sep. 23, 2010.

- Yun, ○○ (Neuroscience, KIST Campus)
- Verified for the first time that gliocyte, a non-neural cell, secretes signal delivery substance in their paper.



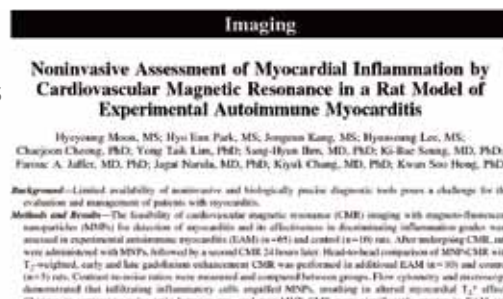
Identification of a mechanism of temperamental control through non-neuronal in **Cell**, Sep. 28, 2012.

- Woo, ○○ (Neuroscience, KIST Campus)
- Study of the mechanism behind absence epilepsy (a brief seizure that lasts for seconds to tens of seconds)



Development of early diagnosis technology for myocarditis in **Circulations**, Apr. 16, 2012.

- Moon, ○○ (Bio-Analytical Science, KBSI Campus)
- Development of early diagnosis technology for myocarditis using bio-friendly nano-bio fusion imaging technology



Identification optogenetically induced sleep spindle rhythms alter sleep architectures in mice in **PNAS(Proceedings of the National Academy, of Sciences)**, Nov. 20, 2012.

- Kim, ○○ (Neuroscience, IBS Campus)
- Study of the optogenetically induced sleep spindle rhythms alter sleep architectures



UST Ph.D. Graduates' Research Achievements

SCI paper per graduate	Patents per graduate
4.25	1.73

※ 2008 ~ 2014 spring graduates.

Research Project were selected as 100 Excellent National Research and Development Projects

■ Selections for 2012

Institution	UST	Seoul National University	POSTECH	GIST	KAIST
No. of Project	9	1	4	1	4

■ Selections for 2011

Institution	UST	Seoul National University	POSTECH	GIST	KAIST
No. of Project	7	7	1	3	9

High standards of student support

Scholarship and Benefits

- Highest standards of scholarship benefits

- Supported by monthly stipend

Doctoral Program	Master Program
Minimum of KRW 1,600,000 per month	Minimum of KRW 1,200,000 per month

- ※ UST students are supported by monthly stipend as a research scholar participating in the research at the government-funded research institutes.

- ※ Additional allowance may be provided depending on campus budget.

- Other scholarship and welfare benefits

- Participation in national projects involving world-class research facilities

Classification	Contents
Major research facilities	<ul style="list-style-type: none">• RV Araon, King Sejong Station(KOPRI)• Naro (KSLV-1), Naro Space Center(KARI)• SMART nuclear reactor, Hanaro nuclear reactor(KAERI)• KSTAR, ITER international joint development project(NFRI)• National Primate Research Center, Korean Bioinformation Center(KRIBB)• International joint development of 25m Giant Magellan Telescope(KASI)• Possession of world-class equipment including the super computing center(KISTI)

- A dormitory room is provided for each student. (availability limited in some campuses)

Other Benefits for Outstanding Students

- Overseas Training Program

- UST supports students who attend the internship or co-work in renowned overseas university or research institutes

- Overseas Exchange Program

- Overseas Academic Exchange : UST supports students who present their papers in international conference
- Overseas Trend Survey: UST assists students to visit and experience advanced education system in renowned overseas university or research institutes

- UST Research Paper Award

- Outstanding research achievements for the journal, conference, patents, the others.

Student Welfare

- All students are provided with general insurance covering medical expenses, etc.
- All Students are provided with the regular health check-up.
- All students are provided with online or face-to-face counseling.
- All students are provided with a free SMS, Web-mail.

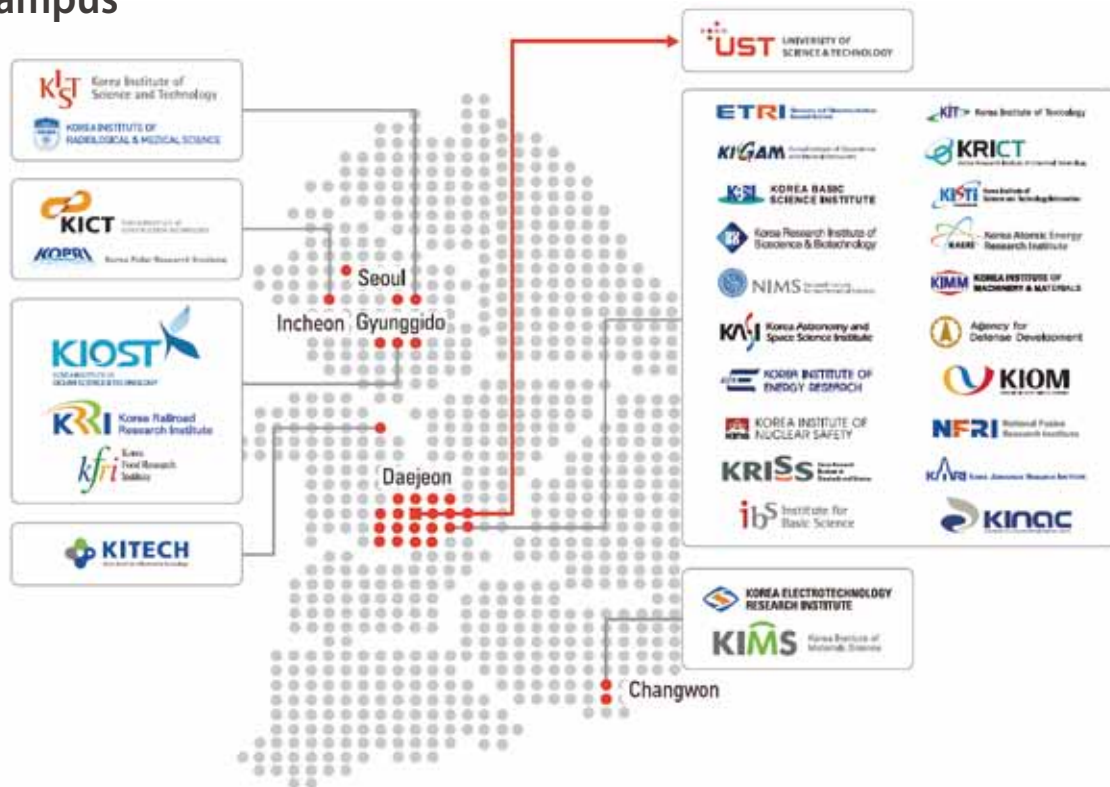
Advanced Education System

- New major can be adjusted each semester
 - a timely and flexible response to rapid changes in the field of science and technology through the adjustment of majors.
- Application fee and thesis examination fee are abolished to provide equal opportunity for more educational consumers.
- Introducing instruction real-name system
 - Instructor's name and campus will be provided on transcripts to encourage their recognition of teaching responsibility.

Agreement for Academic Exchange with Prestigious Universities in Korea (22 universities in total)

- Seoul National University, KAIST, GIST, Yonsei Univ., Korea Univ., Korea Univ. Green School, Sogang Univ., Hanyang Univ., Kangwon National Univ., Konkuk Univ., Donga Univ., Pusan National Univ., Seoul Univ. Science & Technology, University of Seoul, Ajou Univ., Yeungnam Univ., Chonbuk National University, Changwon National Univ., Chungnam National Univ., Chungbuk National Univ., Korea Aerospace Univ., Korea Maritime Univ. Jeju National Univ.

Campus



Major (79 in total)

※ Some majors may not be opened for admission of the fall semester, 2014 or spring semester, 2015.
(as of spring semester, 2014)

Division	Major	Division	Major
Science (25)	Science and Technology Policy	Science (25)	Biomolecular Science
	Mineral & Groundwater Resources		Neuroscience
	Polar Science		Biosystems & Bioengineering
	Functional Genomics		Radiological Cancer Medicine
	Nano and Bio Surface Science		Medicinal and Pharmaceutical Chemistry
	Nano Science		Medical Physics
	Isotope Geochemistry		Astronomy and Space Science
	Bioinformatics		Green Chemistry and Environmental Biotechnology
	Bio-Analytical Science		Science of Measurement
	Biological Chemistry		Korean Medicine Life Science
	Marine Environmental Chemistry and Biology		Marine Biology
	Chemical Convergence Materials		Nuclear Fusion and Plasma Science
			Marine Environmental System Science

Division		Major	Division		Major
Engineering (54)	BT	Nanobiotechnology	Engineering (54)	ET	Radiation Measurement and Radiation Safety
		Radiation Biotechnology and Applied Radioisotope Science			Petroleum Resources Technology
		Bioprocess Engineering			Ship and Ocean Plant Engineering
		Food Biotechnology			Advanced Materials Engineering
		Human and Environmental Toxicology			Advanced Energy Technology
		Biomedical Engineering			Advanced Nuclear System Engineering
		Marine Biotechnology			Quantum Energy Chemical Engineering
	NT	Accelerator and Beam Nano Engineering			Energy and Power Conversion Engineering
		Nano-Mechatronics			Energy System Engineering
		Nanomaterials Science and Engineering			Energy and Environmental Engineering
		Electrical Functionality Material Engineering			Resources Recycling
	IT	HCI & Robotics			Renewable Energy Engineering
		Virtual Engineering			Geotechnical & Geo-Space Engineering
		Broadband Network Technology			Railway System Engineering
		Transportation and Logistics System & ITS Engineering			Green Process and System Engineering
		Grid and Supercomputing			Clean Energy and Chemical Engineering
		Electronic Counter Counter-Measure Communications Technology			Plant System and Machinery
		Big Data Science			Nuclear Nonproliferation Engineering
		Mobile communication & Digital Broadcasting Engineering			Environment & Energy Mechanical Engineering
		Electrical Equipment Information and Communications Engineering			Rare Metals Engineering
		Construction Environment Engineering			Space Launch Vehicle System Engineering
		Geophysical Exploration			

Admission Plan for Special Admission-Foreigners, Koreans Living Overseas (Fall semester 2014, Spring semester 2015)

Application Schedule

No.	Process		Date and Time	Note
1	Announcement of Admission Guide		Mar.3(Mon), 2014	• UST Homepage Notice**
2	Application- step ①. Submission Application form		Mar.12(Wed), 9:00, ~ Mar.24(Mon.), 18:00, 2014	• Use the online admission application system (http://apply.ust.ac.kr)
3	Application - step ②. Submission additional Required documents	by Post*	Mar.12(Wed), 9:00, ~ Apr.7(Mon), 18:00, 2014 (should be arrived within this period)	<ul style="list-style-type: none"> Place to be submitted : Staff of Admission Application, Student Affairs Team, UST, 217 Gajeong-ro, Yuseong-gu, Daejeon, Korea (Postal code: 305-350) → Applicable to choose between ① and ② only for a letter of reference <ul style="list-style-type: none"> ① fill out the provided form and seal it, submit it by post or by visiting ② complete and submit using the online admission application system (http://apply.ust.ac.kr)
		Visit UST		
4	Arrival Check of Submitted and Missing Documents		Mar.12(Wed), 9:00 ~ Apr.7(Mon), 18:00, 2014	<ul style="list-style-type: none"> By online admission application system (http://apply.ust.ac.kr) Applicants should check at the system for oneself(http://apply.ust.ac.kr) Refer to page 14
5	Announcement of Successful Applicants after the first (Document screening) and the schedule of the Second selection (In-depth Interview)		May.2(Fri), 17:00, 2014	• Use the online admission application system (http://apply.ust.ac.kr)
6	the Second selection(In-depth Interview) in each field of study		May.8(Thu) ~ May.9(Fri), 2014 [Expected]	• following by the individual schedule
7	Announcement of Final Successful Applicants		June.5(Thu), 17:00, 2014	<ul style="list-style-type: none"> Method announcement through the <ul style="list-style-type: none"> ① UST Homepage** ② online admission application system (http://apply.ust.ac.kr)
8	Admission Registration	If choosing fall semester, 2014 admission	June.12(Thu) ~ June.18(Wed), 18:00, 2014	
		If choosing spring semester, 2015 admission	in Dec. 2014 [Expected]	

※ Detailed procedures may be subject to change and will be announced on the UST homepage (www.ust.ac.kr)

※ *Traceable post mail only is acceptable, when using postal service (e.g.,- Registered Post, EMS, DHL, FedEx, UPS) (Non-traceable mail is not be acceptable).

※ **Method to find : UST homepage (www.ust.ac.kr) > English Version > Admissions > Notice

※ The application schedule for Korean applicants is different. (Please check the admission guide for Korean applicant)

Qualification

Applicant Type		Qualification
Special Admission	Foreigners	<ul style="list-style-type: none"> • Must not have held Korean Citizenship, and whose parents are not citizens of Korea. • Excluded are those with dual nationality or without a nationality.
	Koreans Living Overseas	<ul style="list-style-type: none"> • Children of overseas Koreans who have completed at least sixteen years of education in foreign countries.

Selection of Admission Time

- Applicants belonging to a special admission type can choose either the **Fall semester, 2014** or the **Spring semester, 2015** for as their admission time.

Degree Program to Apply for

Admission Time	Fall semester, 2014	Spring semester, 2015
Doctoral Program	Those who have a master's degree or are expected to get one by Aug. 2014	Those who have a master's degree or are expected to get one by Feb. 2015
	Those who are recognized as having qualifications equivalent to a master's degree or approved by law	
Integrative Program, Master's Program	Those who have a bachelor's degree or are expected to get one by Aug. 2014	Those who have a bachelor's degree or are expected to get one by Feb. 2015
	Those who are recognized as having qualifications equivalent to a bachelor's degree or approved by law	

What is an integrative program ?

- An integrative program is defined as a graduate program in which students can obtain a doctoral degree.
- Those who are admitted through this program should pass a qualification examination for their doctoral program.
- Only a master's degree is conferred on those who have passed the qualification examination for a doctoral program and have met the requirements of the master's degree; if they quit during the program.

Application

- Admission application will be completed when both the requirements stipulated in ①「Submission Application Form」 and ②「Submission Additional Required documents」 are met.
- Be capable of choosing only one for 'admission time', 'campus', 'major', 'degree program' each.
(Can not choose in duplicate)
-> An offer of admission may be withdrawn and submission of application form will be invalid, when choosing in duplicate.
- Period

Step	Way	Period
Step ①. Submission Application Form	<ul style="list-style-type: none"> Use the online admission application system (http://apply.ust.ac.kr) 	Mar. 12.(Wed), 9:00 ~ Mar. 24.(Mon), 18:00, 2014
Step ②. Submission Additional Required documents	<ul style="list-style-type: none"> By post or by visiting us → Applicable to choose between ① and ② only for a letter of reference ① fill out the provided form and seal it, submit it by post or by visiting ② complete and submit using the online admission application system (http://apply.ust.ac.kr) 	Mar. 12.(Wed), 9:00 ~ Apr. 7.(Mon), 18:00, 2014 (should be arrived within this period)

Application Procedure

① Submission Application form (Only through the online admission application system)

No.	Procedure	Note
1	Going to the UST Homepage (http://www.ust.ac.kr) → Click 'Admission Application' menu (move to the relevant web page)	<ul style="list-style-type: none"> Additional Access route : 'Online admission application system' (http://apply.ust.ac.kr)
2	Choose one 'Admission Time' and 'Applicant Type'	<ul style="list-style-type: none"> Cannot make modification after choosing (refer to page 12 for the applicant type)
3	Make applicant's account	<ul style="list-style-type: none"> One account for one person
4	Fill in the 'Application form' at the system	<ul style="list-style-type: none"> Please fill in all blanks Your color photo should be taken of the date of application 3 months
5	Check whether all of the information is correct,	<ul style="list-style-type: none"> Cannot make modifications or cancel after submitting the 'Application form'
6	Finally, Save the 'Application form',	
7	After saving the 'Application form' in the system, print out the 'Application form', the 'Test identification slip', and the 'Envelope cover'	<ul style="list-style-type: none"> Color printing for the photo Please bring the test identification slip during the second selection(In-depth Interview) in each field of study

※ An offer of admission may be withdrawn if any of the submitted documents contains false information

※ Information on submitted documents cannot be modified. Documents will not be returned.

※ **Choose only one 'admission time', 'campus', 'major', and 'degree program'.**
(Can not choose in duplicate)

-> An offer of admission may be withdrawn and the submission of the application form will be invalid, when choosing in duplicate.

② Submission Additional Required documents

No.	Procedure	Note
1	<ul style="list-style-type: none"> All required document should be submitted. → refer to the 'list of required documents' on the following page ※ Applicable to choose between ① and ② only for a letter of reference <ul style="list-style-type: none"> ① fill out the provided form and seal it, submit it by post or by visiting ② complete and submit using the online admission application system (http://apply.ust.ac.kr) 	<ul style="list-style-type: none"> Method for sending <ul style="list-style-type: none"> - by traceable mail or by visiting. - Envelope with the provided envelope cover (only for domestic applicants) → refer to the table below for specific about how to submit. The list of required documents should be submitted → refer to the table below and the following page.
2	Completion of Application	
3	Check of document arrival and missing documents	
		<ul style="list-style-type: none"> Check at the online admission application system (http://apply.ust.ac.kr) -> If your status is non-arrival or incomplete, please send supplementary documents again to the 'staff of the Admission application, Student Affairs Team, UST' before the deadline Make sure to visit the online admission application system (http://apply.ust.ac.kr) for check. UST will not contact you individually

※ If all required documents would not be submitted, then will be considered to fail at the formal examination in the first selection(Document screening).

※ Information on submitted documents cannot be modified. Documents will not be returned.

※ Specific information of Method to submit

	Per Post	Visit UST
Way to submit	<ul style="list-style-type: none"> Traceable post mail only is acceptable, when using postal service (e.g.,- Registered Post, EMS, DHL, FedEx, UPS) (Non-traceable mail is not be acceptable). 	<ul style="list-style-type: none"> Visit UST in person ※ Map : UST Homepage (http://www.ust.ac.kr) →English Version →UST Location
Place to be submitted	Staff of Admission Application, Student Affairs Team, UST, 217 Gajeong-ro, Yuseong-gu, Daejeon, Korea (Postal code : 305-350)	
Period	Mar.12(Wed) 9:00, ~ Apr.7(Mon) 18:00, 2014 (should be arrived within this period)	

* [for the foreigner] Applicable to choose between ① and ② only for a letter of reference

① fill out the provided form and seal it, submit it by post or by visiting

② complete and submit using the online admission application system (<http://apply.ust.ac.kr>)

■ List of Required Documents

※ If all required documents would not be submitted, then will be considered to fail at the formal examination in the first selection(Document screening).

Type of Document		No. of Copy	Note
Application Form		1	<ul style="list-style-type: none"> Submit the printed one after saving the 'Application form' through the online admission application system (http://apply.ust.ac.kr)
Additional Required documents	Proposal for Study	1	<ul style="list-style-type: none"> Get the form from the below 2 ways <ol style="list-style-type: none"> UST Homepage (www.ust.ac.kr) > English Version > Admissions > Archive On the online admission application system (http://apply.ust.ac.kr) during the period of submission of additional required documents
	Official English Score [photocopy or Original]	1	<ul style="list-style-type: none"> Original documents may be required to confirm, if the copy is submitted Waiver of submission do not need to submit Submission of Official English Score will be deferred for those who fulfill condition and submit the 'Certificate of English as Medium of Instruction' <ul style="list-style-type: none"> - should be submitted with the provided form - Get the form from the below 2 ways <ol style="list-style-type: none"> UST Homepage (www.ust.ac.kr) → English Version → Admissions → Archive On the online admission application system(http://apply.ust.ac.kr) during the period of submission of additional required documents - Seal before Submission
	Certificate of (Expected) bachelor's degree [Original]	1	<ul style="list-style-type: none"> Registration number of degree should be provided (If available) Submit proof of enrollment if a certificate of an expected bachelor's degree is not available
	Transcript of Bachelor's Program [Original]	1	<ul style="list-style-type: none"> Grades must be entered as a percentage (Exceptions are permitted for foreign universities) For transferred students, the transcripts before and after the transfer should be submitted.
	Certificate of Career/ Employment [Original] (If applicable)	1	<ul style="list-style-type: none"> Must be submitted if work experience is listed in
	Certificate of (Expected) Master's degree [Original] (Only for applicant for doctoral program)	1	<ul style="list-style-type: none"> Registration number of degree should be provided (If available) Submit proof of enrollment if a certificate of an expected master's degree is not available
	Transcript of Master's program [Original] (Only for applicant for doctoral program)	1	<ul style="list-style-type: none"> Grades must be entered as a percentage (Exceptions are permitted for foreign universities)
	Thesis for Master's degree [Photocopy or Original] (Only for applicant for doctoral program)	1	<ul style="list-style-type: none"> Only titles of papers and abstracts should be submitted
	Research Achievements [Photocopy or Original] (Only for applicant for doctoral program)	1	<ul style="list-style-type: none"> Publications includes published papers, papers presented at academic conferences, and intellectual property (if available) Applicants should submit a list of publications and a copy of each <ul style="list-style-type: none"> - Publications : should provide information about the author, summary, or abstract - Technical report : should provide information about abstracts and summaries
Additional documents required in accordance with the applicant type		1 for each	<ul style="list-style-type: none"> Refer to 'List of additional documents required in accordance with the application type' table

※ Applicants for the integrative program should submit the same documents as applicants for the master program.

※ Documents in colored shade() should be submitted in accordance with the application type.

※ All documents submitted should be written in Korean or English. For Languages other than Korean or English, Please submit notarized translations (a Consular Confirmations) of the original documents.

※ List of additional documents required in accordance with the application type

Classification	Documents	No. of Copy	Note
Foreigners	Letter of Recommendation [Original]	1	※ Applicable to choose between ① and ② only for a letter of reference (refer to the below table) ① fill out the provided form and seal it, submit it by post or by visiting ② complete and submit using the online admission application system (http://apply.ust.ac.kr)
	A Copy of passport	1	
Koreans Living Overseas	Proof of Citizenship [Original]	1	By post or by visiting
	Certificate of Entry/Exit [Original]	1	

※ Additional documents may be required to confirm status of Foreigners, Koreans Living Overseas.

※ Explanation of how to submit a letter of recommendation in detail [only for foreigner applicant]
(Applicable to choose between ① and ②)

① fill out the provided form and seal it, submit it by post or by visiting

- Choose this way during the period of submission of the application form
[Mar. 12.(Wed), 9:00 ~ Mar. 24.(Mon), 18:00] via the online admission application system(<http://apply.ust.ac.kr>)
- Use the following form provided by UST
- Seal before submission with other additional required documents
- Get the form using either of the two ways below.
 - (a) UST Homepage (www.ust.ac.kr) → English Version → Admissions → Archive
 - (b) On the online admission application system (<http://apply.ust.ac.kr>) during the period of the submission of additional required documents

② complete and submit using the online admission application system (<http://apply.ust.ac.kr>)

1. Input the recommender's information

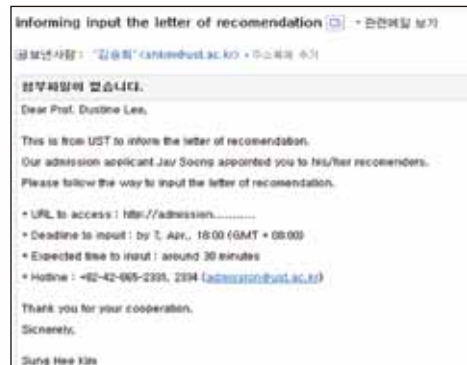
Period	• the period of submission application form [Mar. 12.(Wed), 9:00 ~ Mar. 24.(Mon), 18:00]
Who do	• Admission applicant
Where	• on the online admission application system (http://apply.ust.ac.kr)
Information	• Recommender's information (Name, E-mail, Address, Position, Relationship, etc.)
Note	• can add up to 2 additional recommenders (optional) • can not make modifications of the information



2. Announcement to write a letter of recommendation for recommenders

Period	• after saving 'Application form' finally on the system
Way	• To the e-mail address the applicants provided on the online admission application (Include the URL and password to access, way to write, etc.)

※ E-mail will be sent once to the provided e-mail address. Applicants are required to notify recommenders of the letter of recommendation in advance.



3. Writing the letter of recommendation

Period	• the period of submission additional required documents [Mar. 12.(Wed), 9:00 ~ Apr. 7.(Mon), 18:00, 2014] (should arrive within this period)
How to write	• Recommender writing the letter of recommendation according to the e-mail address (Confirmation e-mail will be sent to the recommender after completing the letter of recommendation)

4. Applicants can check whether the letter of recommendation has been submitted

Period	• the period of submission additional required documents [Mar. 12.(Wed), 9:00 ~ Apr. 7.(Mon), 18:00, 2014] (should arrive within this period)
How to check	• through the online admission application system (http://apply.ust.ac.kr)



▪ Questions and Answers about original documents

Q1. What is the definition of an original document?

[Answer]

- Documents should be issued directly from the institute, on which an official seal or signature must be included
- If the document is photocopied, it will not be recognized as an original document.
- This can be verified by scanning the code (if the code provided).

[Example]



certificate of degree



transcript

Q2. Is there any other way to submit the photocopied document instead of the original document?

[Answer]

- Submitting photocopied documents, certified or notarized confirmations should be indicated on the photocopied documents. These will then be regarded as originals.

[Example]



photocopied certificate of degree with
certified confirmation



photocopied transcript with
certified confirmation

Q3. I only have an original document written in a language other than Korean or English
(e.g., Spanish, Japanese) I know that I can only submit the document written in Korean or English.
How should I submit it?

[Answer]

- Documents not in English or Korean must be accompanied by a complete English or Korean translation authenticated by the issuing institute or notarized by a notary office or embassy.

[Example]



certificate of degree in Spanish



complete Korean translation notarized

■ Official English Score

- Minimum Score Standard

(Applicants should submit one of the official English scores equal to or higher than the minimum scores provided.)

Type	TOEFL			TOEIC	TEPS	IELTS
	iBT	CBT	PBT			
Score	79	213	550	730	657	6

※ The TOEIC score is the sum of the Listening & Reading score.

※ Score should be issued within two years(Mar.25, 2012~ Mar.24, 2014) of the date of application.

- Waiver from submission of official English Score

: Applicants who obtained a bachelor's degree or higher with more than 1 year of study in the English speaking countries, such as the U. S., Canada, Australia, New Zealand, Ireland, or the Republic South Africa.

- Deferred submission of official English scores for the admission application

• A applicant may submit official English scores upon fulfilling the conditions for degree conferment at UST if he/has received a bachelor's or master's degree from an educational institution in one of the 31 English-speaking countries(refer to the table below) designated by UST and if it is proven on the admission application that all courses were conducted in English during the time of enrollment.

• The way to be deferred and period

: Deferral is allowed; only when applicants turn in a 'Certificate of English as Medium of Instruction' using the prescribed form with the admission application.

-> In that case, students can fulfill the one of conditions for degree conferment at UST, when submitting official English score before fulfillment requirement of degree conferral, which is written on the article 16 of 'Regulations Governing Degree Conferral'.

※ 31 English-speaking countries designated by UST

Ghana, Guyana, Republic of The Gambia, Nigeria, Liberia, Lesotho, Rwanda, Malawi, Republic of the Union of Myanmar, Vanuatu, Belize, Bhutan, Solomon Is., Sudan, Sri Lanka, Swaziland, Sierra Leone, Eritrea, Ethiopia, Uganda, Zambia, Zimbabwe, Cameroon, Cambodia, Kenya, Kiribati, Tanzania, Tonga, Papua New Guinea, Fiji, Philippines

- Viewing of English Scores

• English-scores will be directly accessed through the testing institute

• Falsified or forged documents are found, this will lead to admission application rejection for the following five years and a failure an admission.

Procedures of the first Selection (Document screening) and the Second Selection (In-depth Interview)

Selection	Criteria		Date and Note
the first Selection (Document screening)	Formal Examination	<ul style="list-style-type: none"> Check the contents of the admission application (Including submission all required documents, satisfaction of minimum required official English score) 	<ul style="list-style-type: none"> Announcement of Successful Applicants after the first selection (Document screening) and the schedule of the second selection (In-depth Interview) : May. 2.(Fri), 17:00, 2014 Method : UST Homepage (www.ust.ac.kr) → English Version → Admissions → Archive
	Substantial Examination	<ul style="list-style-type: none"> Applicant's competence will be evaluated based on the documents that applicants submit including transcripts of undergraduate and graduate programs, and study proposals. 	
the second Selection (In-depth Interview)		<ul style="list-style-type: none"> Evaluation by in-depth interview in each field of study: Overall screening will be conducted in term of the applicants' capability of completing the degree program, enthusiasm for study and research, and capability and potential of and scientific experiments academic communications. 	<ul style="list-style-type: none"> Date : May. 8(Thu)~May. 9(Fri), 2014 [Expected] Applicants are required to bring his/her ID card for the interview.

Announcement of Successful Applicants

- Date : June. 5(Thu) 17:00, 2014
- Method : Through the online admission application system (<http://apply.ust.ac.kr>)

Admission Registration for Final Successful Applicants to Enter in the Fall semester, 2014

- Method
 - ① UST Homepage (www.ust.ac.kr) > English Version > Admissions > Archive
 - ② Through the online admission application system (<http://apply.ust.ac.kr>)
- Registration Fee : KRW 180,000
(Convertible for the applicants choosing the spring semester of 2015 as their admission time)
- Freshmen insurance for special admission(Foreigner): KRW20,000
- Foreign students must pay an annual insurance fee of KRW 20,000 for coverage of illnesses,
- Not : Admission will be canceled for anyone who fails to register during the designated period.

※ Admission registration information will be announced in December, 2014 for final successful applicants who choose the spring semester, 2015 as admission time.

Attention

1. Related to the Submission Application form

- Your permissions required for the collection and use of personal information through the online admission application system (<http://apply.ust.ac.kr>), as it may be used in the enrollment of successful candidates on the school register.
- **Must choose only one 'admission time', 'campus', 'major', 'degree program' each. (Can not choose in duplicate)**
-> **An offer of admission may be withdrawn and the submission of the application form will be invalid, when choosing in duplicate.**
- An offer of admission may be withdrawn and the submission of the application [to be used in the school register and for the student ID.]
- List an accurate e-mail address during online application as important announcements will be made via e-mail. UST will not take responsibility for disadvantages that may occur from inaccurate information.
- Certificate of career and employment must be submitted if work experience listed on the application form.

2. Related to the Submission Additional Required Documents

- Issuance date of certificate should be within 3 month from the date of submission.
- Information on submitted documents cannot be modified. Documents will not be returned.
- Students expecting graduation must submit proof of graduation and academic transcripts(including date of degree conferral or degree registration number) by the deadline below. The offer of admission may be withdrawn otherwise.

Admission Time	Fall semester 2014	Spring semester 2015
Deadline to be submitted	by Sep. 10, 2014	by Mar. 10, 2015

- All documents submitted should be written in Korean or English. For Languages other than Korean and English, please submit them notarized translations(a Consular Confirmations) of the original documents.

3. Others

- Additional Documents for Submission by final successful applicants in accordance with the 'Apostille Convention', applicants graduated from universities out of Korea
 - Document to be issued with an 'Apostille certificate' on
: Certificate of degree for Bachelor's (and Master's for doctoral program applicants), Academic transcript for Bachelor's (and Master's for doctoral program applicants)
 - Submission Period

Admission Time	Fall semester 2014	Spring semester 2015
Deadline to be submitted	by Sep. 10, 2014	by Mar. 10, 2015

- Place of Issue : Authorities designated by your government

- ※ Refer to [www.hcch.net] for information on authorities per country.
- ※ **All documents submitted should be written in Korean or English. For Languages other than Korean or English, Please submit along with notarized translations(a Consular Confirmations) of the original documents.**
- ※ The apostille certificate **can be replaced with and 'a Consular Confirmations'**, If the country is not a member of 'Apostille convention'.
(Place of Issue : Korean embassy or consulate in your country or Embassy or consulate of your country in Korea)

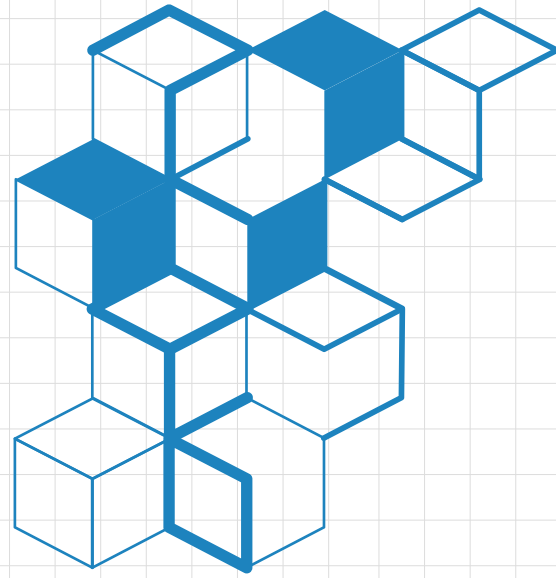
Apostille Convention?

An international treaty that facilitates mutual certification of official documents between state parties by recognizing legalization in the country of issue without complex authentication procedures.

- Student who deferred submission of official English scores for admission application
 - should submit one of the official English score described article 16 in the UST policy for degree conferral within the designated period for degree conferral.
- Degree Conferral Requirement of passing TOPIK (Test of Proficiency in Korean)
 - Applicability : for freshmen entering through Special Admission process.
 - TOPIK passing mark : grade 2 or higher(applies to all degrees)
- An offer of admission may be withdrawn if any of the submitted documents contains false information.
- Falsified or forged documents are found, this will lead to admission application rejection for the following five years and a failure an admission.
- No offers will be made if all applicants are deemed unqualified.
- UST makes it a rule to study as a full-time student (from 9 A.M. to 6 P.M., Monday through Friday)

For more information, Please contact us at

Related with admission application	Related with online admission application system
Student Affairs Team	Smart University Team
Hotline. : +82-42-865-2331, 2334 E-mail : admission@ust.ac.kr	Hotline : +82-42-865-2383 E-mail : egasusiz@ust.ac.kr



The Major List of Admission Plan of each Campus

Admission in Fall semester, 2014
Special Admission-Foreigners

1. Korea Polar Research Institute

<http://www.kopri.re.kr>



Korea Polar Research Institute

- Admission Plan for each Major

(○: opening to admission)

Major	Program		
	Doctoral	Integrative	Master
Polar Science	○	○	○
	Professor in charge : Park Hyun (032-260-6151, hpark@kopri.re.kr)		

[note] Professor to each major

- Search through UST Homepage (<http://www.ust.ac.kr>)
[way to find : UST Homepage > Campus/Major > searching by campus or major]



2. University of Science and Technology (Headquarter) <http://www.ust.ac.kr>



- Admission Plan for each Major

(○: opening to admission)

Major	Program		
	Doctoral	Integrative	Master
Science and Technology Policy	○	○	○
	Professor in charge : Lee Byung Min (042-865-2306, leebm@ust.ac.kr)		

[note] Professor to each major

- Search through UST Homepage (<http://www.ust.ac.kr>)
[way to find : UST Homepage > Campus/Major > searching by campus or major]



3. Korea Institute of Materials Science

<http://www.kims.re.kr>



- Admission Plan for each Major

(○: opening to admission)

Major	Program		
	Doctoral	Integrative	Master
Advanced Materials Engineering	○	○	○
	Professor in charge : Chul-jin Choi (055-280-3532, cjchoi@kims.re.kr)		

[note] Professor to each major

- Search through UST Homepage (<http://www.ust.ac.kr>)
[way to find : UST Homepage > Campus/Major > searching by campus or major]

Major	Professor	Research Field	E-mail	Note
Advanced Materials Engineering	Dong-Ho Kim	Thin film solar cells, Molecule sensing materials and devices, Nano electronic materials and devices	dhkim2@kims.re.kr	
	Wonoh Lee	Carbon-nanomaterials, Carbon-nanomaterial based energy generation and storage device, Carbon-nanomaterial based organic FET device and sensor	wonohlee@kims.re.kr	
	LEE JOOYUL	Electrochemistry/Surface Technology	leeact@kims.re.kr	
	Bong Sun You	New Processing Technology for the Mg Alloys	bsyou@kims.re.kr	
	Jeon Jae-Ho	Electronic Ceramics	jhjeon2004@gmail.com	
	Chang Dong Yim	Design and Fabrication Technologies of Lightweight Metallic Materials (magnesium alloy) with High Performance	cdyim03@kims.re.kr	
	Kim Young Min	Alloy design and microstructure control/analysis of light metals	ymkim@kims.re.kr	



4. Korea Institute of Construction Technology

<http://www.kict.re.kr>



- Admission Plan for each Major

(○: opening to admission)

Major	Program		
	Doctoral	Integrative	Master
Construction Environment Engineering	○	○	○
	Professor in charge : Kim, Hyeon-jun (031-910-0266, hjkim@kict.re.kr)		
Transportation and Logistics System & ITS Engineering	○	○	○
	Professor in charge : Hong Soon- Heum (031-460-5481, shong@krii.re.kr)		
Geotechnical & Geo-Space Engineering	○	○	○
	Professor in charge : Choi, Changho (031-910-0785, chchoi@kict.re.kr)		

[note] Professor to each major

- Search through UST Homepage (<http://www.ust.ac.kr>)
[way to find : UST Homepage > Campus/Major > searching by campus or major]

Major	Professor	Research Field	E-mail	Note
Construction Environment Engineering	Kim, Hyeon-jun	Water resources/hydrology	hjkim@kict.re.kr	
	Kim, Kwang Soo	Bio-polymer for wastewater treatment	kskim@kict.re.kr	
	Joo, Jin Chul	Converged reactive contaminated soil and groundwater	jcjoo@kict.re.kr	
	Lee Hyun Dong	Water distribution and their networks	hdlee@kict.re.kr	
	Kim Ree Ho	Low impact development and green infrastructure	rhkim@kict.re.kr	
	Hosang Ahn	Nano-material for environment application	hahn@kict.re.kr	
	Kang Sung Won	Eco-river restoration	kangsw93@kict.re.kr	
Geotechnical & Geo-Space Engineering	Choi, Changho	Soil Improvement and Offshore Geotechnical Engineering	chchoi@kict.re.kr	
	Han, Jin-Tae	Soil dynamic and Geotechnical Earthquake Engineering	jimmyhan@kict.re.kr	

5. Korea Institute of Science & Technology

<http://www.kist.re.kr>



Korea Institute of
Science and Technology

- Admission Plan for each Major

(○: opening to admission)

Major	Program		
	Doctoral	Integrative	Master
HCI & Robotics	○	○	○
	Professor in charge : Ahn, Sang Chul (02-958-5777, asc@imrc.kist.re.kr)		
Construction Environment Engineering	○	○	○
	Professor in charge : Kim, Hyeon-jun (031-910-0266, hjkim@kict.re.kr)		
Science and Technology Policy	○	○	○
	Professor in charge : Lee Byung Min (042-865-2306, leebm@ust.ac.kr)		
Nanomaterials Science and Engineering	○	○	○
	Professor in charge : YoungWhan Cho (02-958-5465, oze@kist.re.kr)		
Biological Chemistry	○	○	○
	Professor in charge : Hyunah Choo (02-958-5157, hchoo@kist.re.kr)		
Biomolecular Science	○	○	○
	Professor in charge : Byoung Mog Kwon (042-860-4100, kwonbm@kribb.re.kr)		
Neuroscience	○	○	○
	Professor in charge : Cho Jei Won (02-958-6955, jeiwon@kist.re.kr)		
Human and Environmental Toxicology	○	○	○
	Professor in charge : Chang-Woo Song (063-570-8100, cwsong@kitox.re.kr)		
Energy and Environmental Engineering	○	○	○
	Professor in charge : Gwi-Nam Bae (02-958-5676, gnbae@kist.re.kr)		
Biomedical Engineering	○	○	○
	Professor in charge : Park Kwi Deok (02-958-5288, kpark@kist.re.kr)		
Green Process and System Engineering	○	○	○
	Professor in charge : SANG YONG KIM (041-589-8356, sykim@kitech.re.kr)		
Clean Energy and Chemical Engineering	○	○	○
	Professor in charge : Lee Hyun Joo (02-958-5868, hjlee@kist.re.kr)		

[note] Professor to each major

- Search through UST Homepage (<http://www.ust.ac.kr>)

[way to find : UST Homepage > Campus/Major > searching by campus or major]

6. Korea Institute of Science & Technology Information

<http://www.kisti.re.kr>


- Admission Plan for each Major

(○: opening to admission)

Major	Program		
	Doctoral	Integrative	Master
Science and Technology Policy	○	○	○
	Professor in charge : Lee Byung Min (042-865-2306, leebm@ust.ac.kr)		
Broadband Network Technology	○	○	○
	Professor in charge : Byung Jun Ahn (042-860-5510, bjahn@etri.re.kr)		
Grid and Supercomputing	○	○	×
	Professor in charge : Jysoo Lee (042-869-0591, jysoo@kisti.re.kr)		
Big Data Science	○	○	○
	Professor in charge : Hahn Sun Hwa (042-869-1010, shhahn@kisti.re.kr)		
Knowledge and Information Science	○	○	○
	Professor in charge : Moon, Yeongho (02-3299-6090, yhmoon@kisti.re.kr)		

[note] Professor to each major

- Search through UST Homepage (<http://www.ust.ac.kr>)

[way to find : UST Homepage > Campus/Major > searching by campus or major]

Major	Professor	Research Field	E-mail	Note
Grid and Supercomputing	Seo-Young Noh	Cloud Computing/ Scientific Data Management	rsyoung@kisti.re.kr	
Big Data Science	Jung, Han Min	Big Data Analytics Infra	jhm@kisti.re.kr	
	Sa-kwang Song	Big Data Processing and Analytics	esmallj@kisti.re.kr	

7. Korea Institute of Machinery & Materials

<http://www.kimm.re.kr>



**KOREA INSTITUTE
MACHINERY & MATERIALS**

- Admission Plan for each Major

(○: opening to admission)

Major	Program		
	Doctoral	Integrative	Master
Nano-Mechatronics	○	○	○
	Professor in charge : Jae Jong Lee (042-868-7145, jjlee@kimm.re.kr)		
Nanobiotechnology	○	×	×
	Professor in charge : CHUNG, BONG HYUN (042-860-4442, chungbh@kribb.re.kr)		
Plant System and Machinery	○	○	○
	Professor in charge : Myungbae Kim (042-868-7340, mbkim@kimm.re.kr)		
Environment & Energy Mechanical Engineering	×	○	○
	Professor in charge : Oh, Seungmook (042-868-7382, mook@kimm.re.kr)		

[note] Professor to each major

- Search through UST Homepage (<http://www.ust.ac.kr>)

[way to find : UST Homepage > Campus/Major > searching by campus or major]

Major	Professor	Research Field	E-mail	Note
Nano-Mechatronics	Jung Yup, Kim	Nano-bio Measurement	jykim@kimm.re.kr	
	Hwang Joo Ho	Simulation for manufacturing machin	jooho@kimm.re.kr	
Nanobiotechnology	Lim Hyuneui	Nature-Inspired functional Surfaces	helim@kimm.re.kr	
Environment & Energy Mechanical Engineering	Kookyong Ahn	Gas Turbine Combustion Technology	kyahn@kimm.re.kr	
	Sanggyu Kang	Fuel Cell System	kyu2613@kimm.re.kr	
	Oh, Seungmook	Advanced Engine Combustion	mook@kimm.re.kr	

8. Korea Research Institute of Bioscience & Biotech

<http://www.kribb.re.kr>

 Korea Research Institute of
Bioscience & Biotechnology

- Admission Plan for each Major

(○: opening to admission)

Major	Program		
	Doctoral	Integrative	Master
Nanobiotechnology	○	×	×
	Professor in charge : CHUNG, BONG HYUN(042-860-4442, chungbh@kribb.re.kr)		
Bioinformatics	○	○	×
	Professor in charge : Chu, In-Sun (042-879-8520, chu@kribb.re.kr)		
Bioprocess Engineering	×	○	×
	Professor in charge : LEE, Hong Weon (042-365-5393, hwlee@kribb.re.kr)		
Bio-Analytical Science	○	○	×
	Professor in charge : Kim Seung Il (042-865-3451, ksi@kbsi.re.kr)		
Biomolecular Science	○	○	×
	Professor in charge : Byoung Mog Kwon (042-860-4100, kwonbm@kribb.re.kr)		
Biosystems & Bioengineering	○	○	×
	Professor in charge : Kwon, Ohsuk (042-860-4459, oskwon@kribb.re.kr)		
Green Chemistry and Environmental Biotechnology	○	○	×
	Professor in charge : Lee Chul Wee (042-860-7381, chulwee@kribb.re.kr)		

[note] Professor to each major

 • Search through UST Homepage (<http://www.ust.ac.kr>)

[way to find : UST Homepage > Campus/Major > searching by campus or major]

8. Korea Research Institute of Bioscience & Biotech

<http://www.kribb.re.kr>

Major	Professor	Research Field	E-mail	Note
Nanobiotechnology	Kim, Moonil	Biosensor	kimm@kribb.re.kr	
	Chung, Bong Hyun	Biochip/Biosensor, Nanomedicine	chungbh@kribb.re.kr	
Bioinformatics	Young Joo Kim	Systems Biology	yjkim8@kribb.re.kr	
Bioprocess Engineering	Lee EunGyo	Process development for biologics production	eglee@kribb.re.kr	
Bio-Analytical Science	Kang Sung Hyun	Proteomics	skang@kribb.re.kr	
Biomolecular Science	Kim, Chang-Jin	Microbial exploitation	changjin@kribb.re.kr	
	Sun Hong Kim	Cell signal transduction Drug discovery	sunhong@kribb.re.kr	
Biosystems & Bioengineering	Sohn Jung-Hoon	Yeast and Bioenergy	sohn4090@kribb.re.kr	
	Kwon, Ohsuk	Functional genomic study of microbial metabolic/ signal transduction networks and synthetic biological cell remodeling	oskwon@kribb.re.kr	
	Poo Haryoung	Vaccine/ Immune	haryoung@kribb.re.kr	
	Oh, Doo-Byoung	Glycobiology, Protein engineering	dboh@kribb.re.kr	
Green Chemistry and Environmental Biotechnology	Hee-Sik Kim	Microalgae-based Bioenergy	hkim@kribb.re.kr	



9. Korea Institute of Industrial Technology

<http://www.kitech.re.kr>



- Admission Plan for each Major

(○: opening to admission)

Major	Program		
	Doctoral	Integrative	Master
Virtual Engineering	×	○	○
	Professor in charge : Hwang Ho Young (032-850-0463, hyhwang@kitech.re.kr)		
Nanobiotechnology	○	○	○
	Professor in charge : CHUNG, BONG HYUN (042-860-4442, chungbh@kribb.re.kr)		
Energy System Engineering	○	○	○
	Professor in charge : Park Byung Sik (042-860-3323, bspark@kier.re.kr)		
Electronic Packaging Engineering	×	○	○
	Professor in charge : Kim, Jun Ki (032-850-0221, jkim@kitech.re.kr)		
Intelligent Robot Engineering	○	○	○
	Professor in charge : Ryuh young Sun (031-8040-6381, ysryuh@kitech.re.kr)		
Green Process and System Engineering	○	○	○
	Professor in charge : SANG YONG KIM (041-589-8356, sykim@kitech.re.kr)		
Rare Metals Engineering	○	×	○
	Professor in charge : TAEK-SOO KIM (032-850-0409, tskim@kitech.re.kr)		

[note] Professor to each major

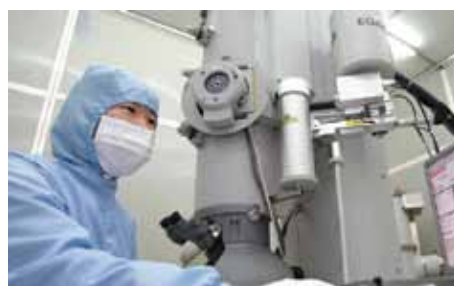
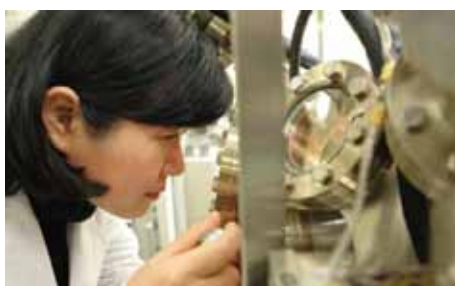
- Search through UST Homepage (<http://www.ust.ac.kr>)

[way to find : UST Homepage > Campus/Major > searching by campus or major]

9. Korea Institute of Industrial Technology

<http://www.kitech.re.kr>

Major	Professor	Research Field	E-mail	Note
Nanobio technology	SungHo Lee	BioMEMS Engineering	memslee@kitech.re.kr	
Energy System Engineering	Kwon Oh-Kyung	Thermal & Fluid / HVAC	kwonok@kitech.re.kr	
Electronic Packaging Engineering	Taejin Hwang	Surface engineering	greathtj@gmail.com	
Intelligent Robot Engineering	Lee Dong Wook	Human-Robot Interaction	dwlee@kitech.re.kr	
Green Process and System Engineering	Shin, Seunghan	polymer/polymer composite	shshin@kitech.re.kr	
	Kim, Yong Jin	catalysis for CO2 conversion	yjkim2005@gmail.com	
	DOHOON LEE	Biocatalyst and Bioprocess	david@kitech.re.kr	
	KIM BAEK JIN	polymer synthesis and properties	bjkim@kitech.re.kr	
	Lee, Uen Do	Thermochemical conversion of low rank fuel	uendol@kitech.re.kr	
	Cho, Jin Ku	Bio-based fuels/chemicals	jkcho@kitech.re.kr	
	Yang Won	Low-carbon combustion in coal power generation	yangwon@kitech.re.kr	
	SANG YONG KIM	biorefinery and green engineering	sykim@kitech.re.kr	



10. Korea Food Research Institute

<http://www.kfri.re.kr>



- Admission Plan for each Major

(○: opening to admission)

Major	Program		
	Doctoral	Integrative	Master
Food Biotechnology	○	○	○
	Professor in charge : Ha Tae Youl (031-780-9054, tyhap@kfri.re.kr)		

[note] Professor to each major

• Search through UST Homepage (<http://www.ust.ac.kr>)

[way to find : UST Homepage > Campus/Major > searching by campus or major]

Major	Professor	Research Field	E-mail	Note
Food Biotechnology	Sang-Hoon Lee	Marine nutraceutical	shnlee@kfri.re.kr	
	SUNG KEUN JUNG	Functional food	skjung@kfri.re.kr	
	Yun-JI Kim	Food Safety	yunji@kfri.re.kr	



11. Korea Institute of Energy Research

<http://www.kier.re.kr>



- Admission Plan for each Major

(○: opening to admission)

Major	Program		
	Doctoral	Integrative	Master
Advanced Energy Technology	○	○	○
	Professor in charge : Kim, Jae Ho (042-860-3351, jaeho@kier.re.kr)		
Energy System Engineering	○	○	○
	Professor in charge : Park Byung Sik (042-860-3323, bspark@kier.re.kr)		
Renewable Energy Engineering	○	○	○
	Professor in charge : Lee Euy-Joon (042-860-3514, ejlee@kier.re.kr)		

[note] Professor to each major

• Search through UST Homepage (<http://www.ust.ac.kr>)

[way to find : UST Homepage > Campus/Major > searching by campus or major]

Major	Professor	Research Field	E-mail	Note
Advanced Energy Technology	Gu-Gon Park	Fuel Cells (Electrocatalyst)	gugon@kier.re.kr	
Energy System Engineering	Dong Sang Keun	advanced combustion system	skdong@kier.re.kr	
	Park Byung Sik	ORC Generator, Combined Heat and Power, District Heating and Cooling	bspark@kier.re.kr	



12. Korea Atomic Energy Research Institute

<http://www.kaeri.re.kr>



- Admission Plan for each Major

(○: opening to admission)

Major	Program		
	Doctoral	Integrative	Master
Accelerator and Beam Nano Engineering	○	×	×
	Professor in charge : Yong Sub Cho (042-868-2881, choys@kaeri.re.kr)		
Science and Technology Policy	○	○	○
	Professor in charge : Lee Byung Min (042-865-2306, leebm@ust.ac.kr)		
Radiation Measurement and Radiation Safety	○	○	○
	Professor in charge : YOON JU-YONG (042-868-0260, k153yjj@kins.re.kr)		
Radiation Biotechnology and Applied Radioisotope Science	○	×	○
	Professor in charge : Kim In Gyu (042-868-8031, igkim@kaeri.re.kr)		
Advanced Nuclear System Engineering	×	○	×
	Professor in charge : Song, Chul-Hwa (042-868-8876, chsong@kaeri.re.kr)		
Quantum Energy Chemical Engineering	○	○	○
	Professor in charge : Paek Seung Woo (042-868-8099, swpaek@kaeri.re.kr)		

[note] Professor to each major

- Search through UST Homepage (<http://www.ust.ac.kr>)

[way to find : UST Homepage > Campus/Major > searching by campus or major]

Major	Professor	Research Field	E-mail	Note
Accelerator and Beam Nano Engineering	Lee, Byung Cheol	Electron Accelerator and Beam Applications	bclee4@kaeri.re.kr	
Radiation Biotechnology and Applied Radioisotope Science	Park Sang Hyun	Radiation and isotope biosciences	parksh@kaeri.re.kr	
	Kim, Jin Kyu	Radiation Biotechnology	jkkim@kaeri.re.kr	
Advanced Nuclear System Engineering	Song, JinHo	Severe Accident Analysis and Experiment	dosa@kaeri.re.kr	

13. Korea Institute of Radiological & Medical Sciences

<http://www.kirams.re.kr>



KOREA INSTITUTE OF
RADIOLOGICAL & MEDICAL SCIENCES

- Admission Plan for each Major

(○: opening to admission)

Major	Program		
	Doctoral	Integrative	Master
Radiological Cancer Medicine	×	×	○
	Professor in charge : Ji, Young-Hoon (02-970-1371, jyh328@kirams.re.kr)		

[note] Professor to each major

• Search through UST Homepage (<http://www.ust.ac.kr>)

[way to find : UST Homepage > Campus/Major > searching by campus or major]

Major	Professor	Research Field	E-mail	Note
Radiological Cancer Medicine	Lee Jin Kyung	Radiological Cancer Medicine	jkleee@kirams.re.kr	



14. Korea Electrotechnology Research Institute

<http://www.keri.re.kr>



- Campus Representative Professor
- Admission Plan for each Major

(○: opening to admission)

Major	Program		
	Doctoral	Integrative	Master
Energy and Power Conversion Engineering	○	○	○
	Professor in charge : Ryoo Hong Je (055-280-1455, hjryoo@keri.re.kr)		

[note] Professor to each major

- Search through UST Homepage (<http://www.ust.ac.kr>)
[way to find : UST Homepage > Campus/Major > searching by campus or major]



15. Electronics and Telecommunications Research Institute

<http://www.etri.re.kr>


- Admission Plan for each Major

(○: opening to admission)

Major	Program		
	Doctoral	Integrative	Master
Science and Technology Policy	○	○	○
	Professor in charge : Lee Byung Min (042-865-2306, leebm@ust.ac.kr)		
Advanced Device Technology	○	○	○
	Professor in charge : Moongyu Jang (042-860-1896, jangmg@etri.re.kr)		
Computer Software	○	○	×
	Professor in charge : Pyeong Soo Mah (042-860-6559, pmah@etri.re.kr)		

[note] Professor to each major

- Search through UST Homepage (<http://www.ust.ac.kr>)

[way to find : UST Homepage > Campus/Major > searching by campus or major]

Major	Professor	Research Field	E-mail	Note
Advanced Device Technology	Do Lee Mi	Flexible electronics and materials	domi@etri.re.kr	
	Ju Jung Jin	Quantum communication & LASER	jju@etri.re.kr	
	Choi Choon-Gi	Meta material, Graphene electronics	cgchoi@etri.re.kr	
	Kim Hyun Tak	Metal-Insulator Transition (MIT)	htkim@etri.re.kr	
Computer Software & Engineering	Ahn Chang Won	Big Data Analysis	ahn@etri.re.kr	

16. Korea Institute of Geoscience & Mineral Resources

<http://www.kigam.re.kr>



- Admission Plan for each Major

(○: opening to admission)

Major	Program		
	Doctoral	Integrative	Master
Mineral & Groundwater Resources	○	×	○
	Professor in charge : Sang-Mo KOH (042-868-3106, kohsm@kigam.re.kr)		
Geophysical Exploration	○	×	×
	Professor in charge : JUNG, HYUN-KEY (042-868-3180, hkjung@kigam.re.kr)		
Petroleum Resources Technology	○	×	×
	Professor in charge : Jang Seong Hyung (042-868-3402, shjang@kigam.re.kr)		
Resources Recycling	○	×	×
	Professor in charge : Lee Jae Chun (042-868-3613, jcleee@kigam.re.kr)		

[note] Professor to each major

• Search through UST Homepage (<http://www.ust.ac.kr>)

[way to find : UST Homepage > Campus/Major > searching by campus or major]

Major	Professor	Research Field	E-mail	Note
Mineral & Groundwater Resources	Sang-Mo KOH	Genesis of REE and non-metlic deposits	kohsm@kigam.re.kr	
		Genesis of rare metal deposits		
Petroleum Resources Technology	Jang Seong Hyung	Seismic exploration	shjang@kigam.re.kr	
	Sangheon Yi	Palynology	shyi@kigam.re.kr	
Resources Recycling	Kim, Byoung-gon	Resources Recycling	bgkim@kigam.re.kr	

17. Korea Astronomy & Space Science Institute

<http://www.kasi.re.kr>



- Admission Plan for each Major

(○: opening to admission)

Major	Program		
	Doctoral	Integrative	Master
Astronomy and Space Science	×	○	○
	Professor in charge : Kwak, Young-Sil (042-865-2069, yskwak@kasi.re.kr)		

[note] Professor to each major

- Search through UST Homepage (<http://www.ust.ac.kr>)

[way to find : UST Homepage > Campus/Major > searching by campus or major]



18. Korea Railroad Research Institute

<http://www.krri.re.kr>



- Admission Plan for each Major

(○: opening to admission)

Major	Program		
	Doctoral	Integrative	Master
Virtual Engineering	○	○	○
	Professor in charge : Hwang Ho Young (032-850-0463, hyhwang@kitech.re.kr)		
Transportation and Logistics System & ITS Engineering	○	○	○
	Professor in charge : Hong Soon- Heum (031-460-5481, shong@krri.re.kr)		
Railway System Engineering	○	○	○
	Professor in charge : SEO, SUNG IL (031-460-5623, siseo@krri.re.kr)		

[note] Professor to each major

- Search through UST Homepage (<http://www.ust.ac.kr>)

[way to find : UST Homepage > Campus/Major > searching by campus or major]

Major	Professor	Research Field	E-mail	Note
Railway System Engineering	Lee Il Wha	Railway Track and Foundation	iwlee@krri.re.kr	
	Kim Dae Sang	Railway System Eng.	kds@krri.re.kr	
	Han Young-Jae	Railway Electrical Eng.	yjhan@krri.re.kr	
	Wonhee You	Railway System Eng. (Control and Noise & Vibration)	whyou@krri.re.kr	
	SEO, SUNG IL	Rolling Stock	siseo@krri.re.kr	



19. Korea Research Institute of standards and Science <http://www.kriss.re.kr>



- Admission Plan for each Major

(○: opening to admission)

Major	Program		
	Doctoral	Integrative	Master
Nano Science	○	×	×
	Professor in charge : Jinhee Kim (042-868-5154, jinhee@kriss.re.kr)		
Advanced Device Technology	○	○	×
	Professor in charge : Moongyu Jang (042-860-1896, jangmg@etri.re.kr)		
Science of Measurement	○	○	○
	Professor in charge : Park Seung Nam (042-868-5200, snpark@kriss.re.kr)		

[note] Professor to each major

- Search through UST Homepage (<http://www.ust.ac.kr>)
[way to find : UST Homepage > Campus/Major > searching by campus or major]

Major	Professor	Research Field	E-mail	Note
Nano Science	Woo Lee	Anodization of valve metals	woolee@kriss.re.kr	
	Song, Jae Yong	Thermoelectric measurement	jysong@kriss.re.kr	
Advanced Device Technology	Kang SangWoo	the development of advanced device tech. using vacuum systems.	swkang@kriss.re.kr	
Science of Measurement	Hyu-Sang Kwon	Acoustics/underwater acoustics, array processing	hyusang@kriss.re.kr	
	Lee, Geun Woo	Materials, condensed matter physics	gwlee@kriss.re.kr	
	Chu-Shik Kang	Double-ended gauge block interferometer	cskang@kriss.re.kr	
	JAE-YONG KWON	Electromagnetic Wave Metrology	jykwon@kriss.re.kr	
	Park Seung Nam	Impedance measurements, magnetics measurements	snpark@kriss.re.kr	

20. Korea Institute of Oriental Medicine

<http://www.kiom.re.kr>



- Admission Plan for each Major

(○: opening to admission)

Major	Program		
	Doctoral	Integrative	Master
Korean Medicine Life Science	○	○	○
	Professor in charge : Kim, Jin Sook (042-868-9465, jskim@kiom.re.kr)		

[note] Professor to each major

- Search through UST Homepage (<http://www.ust.ac.kr>)

[way to find : UST Homepage > Campus/Major > searching by campus or major]



21. Korea Institute Of Ocean Science & Technology

<http://www.kiost.ac>



- Admission Plan for each Major

(○: opening to admission)

Major	Program		
	Doctoral	Integrative	Master
Marine Information and Communication Engineering	×	×	○
	Professor in charge : Seung-Geun Kim (042-866-3832, sgkim@moeri.re.kr)		

[note] Professor to each major

- Search through UST Homepage (<http://www.ust.ac.kr>)

[way to find : UST Homepage > Campus/Major > searching by campus or major]

Major	Professor	Research Field	E-mail	Note
Marine Information and Communication Engineering	Yun Changho	Maritime shipborne networks / underwater networks	sgn0178@kriso.re.kr	



22. Korea Research Institute of Chemical Technology

<http://www.krict.re.kr>


- Admission Plan for each Major

(○: opening to admission)

Major	Program		
	Doctoral	Integrative	Master
Nanomaterials Science and Engineering	○	○	○
	Professor in charge : YoungWhan Cho (02-958-5465, oze@kist.re.kr)		
Medicinal and Pharmaceutical Chemistry	○	○	○
	Professor in charge : Yi Kyu Yang (042-860-7143, kyyi@krict.re.kr)		
Green Chemistry and Environmental Biotechnology	○	○	○
	Professor in charge : Lee Chul Wee (042-860-7381, chulwee@krict.re.kr)		
Chemical Convergence Materials	○	○	○
	Professor in charge : Jinsoo Kim (042-860-7663, jinsoo@krict.re.kr)		

[note] Professor to each major

• Search through UST Homepage (<http://www.ust.ac.kr>)

[way to find : UST Homepage > Campus/Major > searching by campus or major]

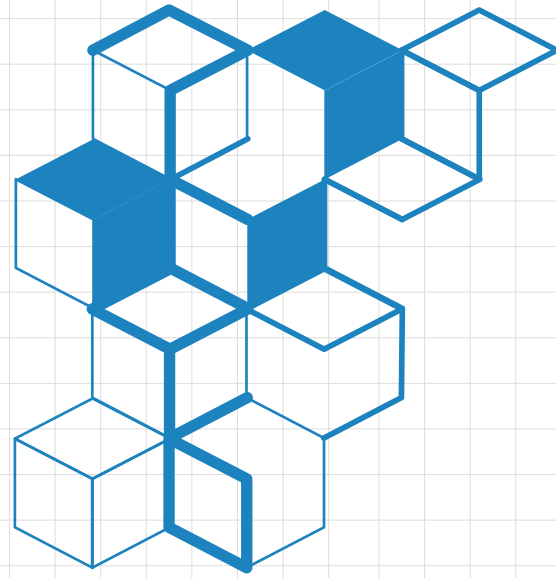
Major	Professor	Research Field	E-mail	Note
Nanomaterials Science and Engineering	Jong-Cheol Lee	Organic Electronic Materials	leejc@krict.re.kr	
Medicinal and Pharmaceutical Chemistry	Pilho Kim	Medicinal Chemistry, Organic Chemistry	pkim@krict.re.kr	
	Young-Sik Jung	medicinal chemistry	ysjung@krict.re.kr	
	Ahn, Sunjoo	Pharmacokinetics	sahn@krict.re.kr	
	Jin hee Ahn	Drug discovery (diabetesandobesity)	jhahn@krict.re.kr	
	Hwan Jung LIM	organic chemistry and medicinal chemistry	indium@krict.re.kr	
	Kwangho Lee	Medicinal and Pharmaceutical Chemistry	kwangho@krict.re.kr	
	Jong Yeon Hwang	Anti-Cancer	jyhwang@krict.re.kr	
	Sung Yun Cho	Organic synthesis medicinalchemistry anti-cancertherapeutics	sycho@krict.re.kr	

22. Korea Research Institute of Chemical Technology

<http://www.krict.re.kr>

Major	Professor	Research Field	E-mail	Note
Green Chemistry and Environmental Biotechnology	JIN-OOK BAEG	Artificial photosynthesis & Development of the photo-bio system	jobaeg@krict.re.kr	
	Lee Chul Wee	Upgrading of heavy oil	chulwee@krict.re.kr	
	Park Soo Youl	Chemical engineering	sypark@krict.re.kr	
	Kew-Ho Lee	Membrane separation	khlee@krict.re.kr	
Chemical Convergence Materials	Won Suk Shin	Organic Electronic Materials and Devices	shinws@krict.re.kr	





The Major List of Admission Plan of each Campus

Admission in Fall semester, 2014
Special Admission-Koreans Living Overseas

1. Korea Polar Research Institute

<http://www.kopri.re.kr>



Korea Polar Research Institute

- Admission Plan for each Major

(○: opening to admission)

Major	Program		
	Doctoral	Integrative	Master
Polar Science	○	○	○
	Professor in charge : Park Hyun (032-260-6151, hpark@kopri.re.kr)		

[note] Professor to each major

- Search through UST Homepage (<http://www.ust.ac.kr>)

[way to find : UST Homepage > Campus/Major > searching by campus or major]



2. University of Science and Technology (Headquarter) <http://www.ust.ac.kr>



- Admission Plan for each Major

(○: opening to admission)

Major	Program		
	Doctoral	Integrative	Master
Science and Technology Policy	○	○	○
	Professor in charge : Lee Byung Min (042-865-2306, leebm@ust.ac.kr)		

[note] Professor to each major

- Search through UST Homepage (<http://www.ust.ac.kr>)
[way to find : UST Homepage > Campus/Major > searching by campus or major]



3. Korea Institute of Materials Science

<http://www.kims.re.kr>



- Admission Plan for each Major

(○: opening to admission)

Major	Program		
	Doctoral	Integrative	Master
Advanced Materials Engineering	○	○	○
	Professor in charge : Chul-jin Choi (055-280-3532, cjchoi@kims.re.kr)		

[note] Professor to each major

• Search through UST Homepage (<http://www.ust.ac.kr>)

[way to find : UST Homepage > Campus/Major > searching by campus or major]

Major	Professor	Research Field	E-mail	Note
Advanced Materials Engineering	Dong-Ho Kim	Thin film solar cells, Molecule sensing materials and devices, Nano electronic materials and devices	dhkim2@kims.re.kr	
	Wonoh Lee	Carbon-nanomaterials, Carbon-nanomaterial based energy generation and storage device, Carbon-nanomaterial based organic FET device and sensor	wonohlee@kims.re.kr	
	LEE JOOYUL	Electrochemistry/Surface Technology	leeact@kims.re.kr	
	Bong Sun You	New Processing Technology for the Mg Alloys	bsyou@kims.re.kr	
	Jeon Jae-Ho	Electronic Ceramics	jhjeon2004@gmail.com	
	Chang Dong Yim	Design and Fabrication Technologies of Lightweight Metallic Materials (magnesium alloy) with High Performance	cdyim03@kims.re.kr	
	Kim Young Min	Alloy design and microstructure control/analysis of light metals	ymkim@kims.re.kr	



4. Korea Institute of Construction Technology

<http://www.kict.re.kr>



- Admission Plan for each Major

(○: opening to admission)

Major	Program		
	Doctoral	Integrative	Master
Transportation and Logistics System & ITS Engineering	○	○	○
	Professor in charge : Hong Soon- Heum (031-460-5481, shong@krri.re.kr)		

[note] Professor to each major

- Search through UST Homepage (<http://www.ust.ac.kr>)
[way to find : UST Homepage > Campus/Major > searching by campus or major]



5. Korea Institute of Science & Technology

<http://www.kist.re.kr>



- Admission Plan for each Major

(○: opening to admission)

Major	Program		
	Doctoral	Integrative	Master
HCI & Robotics	○	○	○
	Professor in charge : Ahn, Sang Chul (02-958-5777, asc@imrc.kist.re.kr)		
Construction Environment Engineering	○	○	○
	Professor in charge : Kim, Hyeon-jun (031-910-0266, hjkim@kict.re.kr)		
Science and Technology Policy	○	○	○
	Professor in charge : Lee Byung Min (042-865-2306, leebm@ust.ac.kr)		
Nanomaterials Science and Engineering	○	○	○
	Professor in charge : YoungWhan Cho (02-958-5465, oze@kist.re.kr)		
Biological Chemistry	○	○	○
	Professor in charge : Hyunah Choo (02-958-5157, hchoo@kist.re.kr)		
Biomolecular Science	○	○	○
	Professor in charge : Byoung Mog Kwon (042-860-4100, kwonbm@kribb.re.kr)		
Neuroscience	○	○	○
	Professor in charge : Cho Jei Won (02-958-6955, jeiwon@kist.re.kr)		
Human and Environmental Toxicology	○	○	○
	Professor in charge : Chang-Woo Song (063-570-8100, cwsong@kitox.re.kr)		
Energy and Environmental Engineering	○	○	○
	Professor in charge : Gwi-Nam Bae (02-958-5676, gnbae@kist.re.kr)		
Biomedical Engineering	○	○	○
	Professor in charge : Park Kwi Deok (02-958-5288, kpark@kist.re.kr)		
Green Process and System Engineering	○	○	○
	Professor in charge : SANG YONG KIM (041-589-8356, sykim@kitech.re.kr)		
Clean Energy and Chemical Engineering	○	○	○
	Professor in charge : Lee Hyun Joo (02-958-5868, hjlee@kist.re.kr)		

[note] Professor to each major

• Search through UST Homepage (<http://www.ust.ac.kr>)

[way to find : UST Homepage > Campus/Major > searching by campus or major]

6. Korea Institute of Science & Technology Information <http://www.kisti.re.kr>



- Admission Plan for each Major

(○: opening to admission)

Major	Program		
	Doctoral	Integrative	Master
Science and Technology Policy	○	○	○
	Professor in charge : Lee Byung Min (042-865-2306, leebm@ust.ac.kr)		
Broadband Network Technology	○	○	○
	Professor in charge : Byung Jun Ahn (042-860-5510, bjahn@etri.re.kr)		
Grid and Supercomputing	○	○	×
	Professor in charge : Ahn, Sang Chul (02-958-5777, asc@imrc.kisti.re.kr)		
Big Data Science	○	○	○
	Professor in charge : Hahn Sun Hwa (042-869-1010, shhahn@kisti.re.kr)		
Knowledge and Information Science	○	○	○
	Professor in charge : Moon, Yeongho (02-3299-6090, yhmoon@kisti.re.kr)		

[note] Professor to each major

- Search through UST Homepage (<http://www.ust.ac.kr>)
[way to find : UST Homepage > Campus/Major > searching by campus or major]

Major	Professor	Research Field	E-mail	Note
Grid and Supercomputing	Seo-Young Noh	Cloud Computing/ Scientific Data Management	rsyoung@kisti.re.kr	
Big Data Science	Jung, Han Min	Big Data Analytics Infra	jhm@kisti.re.kr	
	Sa-kwang Song	Big Data Processing and Analytics	esmallj@kisti.re.kr	

7. Korea Institute of Machinery & Materials

<http://www.kimm.re.kr>



KOREA INSTITUTE
MACHINERY & MATERIALS

- Admission Plan for each Major

(○: opening to admission)

Major	Program		
	Doctoral	Integrative	Master
Nano-Mechatronics	○	○	○
	Professor in charge : Jae Jong Lee (042-868-7145, jjlee@kimm.re.kr)		
Nanobiotechnology	○	○	○
	Professor in charge : CHUNG, BONG HYUN (042-860-4442, chungbh@kribb.re.kr)		
Plant System and Machinery	○	○	○
	Professor in charge : Myungbae Kim (042-868-7340, mbkim@kimm.re.kr)		
Environment & Energy Mechanical Engineering	○	○	○
	Professor in charge : Oh, Seungmook (042-868-7382, mook@kimm.re.kr)		

[note] Professor to each major

- Search through UST Homepage (<http://www.ust.ac.kr>)

[way to find : UST Homepage > Campus/Major > searching by campus or major]

Major	Professor	Research Field	E-mail	Note
Nano-Mechatronics	Jung Yup, Kim	Nano-bio Measurement	jykim@kimm.re.kr	
	Hwang Joo Ho	Simulation for manufacturing machin	joocho@kimm.re.kr	
Nanobiotechnology	Lim Hyuneui	Nature-Inspired functional Surfaces	helim@kimm.re.kr	
Environment & Energy Mechanical Engineering	Kookyong Ahn	Gas Turbine Combustion Technology	kyahn@kimm.re.kr	
	Sanggyu Kang	Fuel Cell System	kyu2613@kimm.re.kr	
	Oh, Seungmook	Advanced Engine Combustion	mook@kimm.re.kr	

8. Korea Research Institute of Bioscience & Biotech

<http://www.kribb.re.kr>



Korea Research Institute of
Bioscience & Biotechnology

- Admission Plan for each Major

(○: opening to admission)

Major	Program		
	Doctoral	Integrative	Master
Nanobiotechnology	○	○	×
	Professor in charge : CHUNG, BONG HYUN(042-860-4442, chungbh@kribb.re.kr)		
Bioinformatics	○	○	×
	Professor in charge : Chu, In-Sun (042-879-8520, chu@kribb.re.kr)		
Bioprocess Engineering	×	○	×
	Professor in charge : LEE, Hong Weon (042-365-5393, hwlee@kribb.re.kr)		
Bio-Analytical Science	○	○	×
	Professor in charge : Kim Seung Il (042-865-3451, ksi@kbsi.re.kr)		
Biomolecular Science	○	○	×
	Professor in charge : Byoung Mog Kwon (042-860-4100, kwonbm@kribb.re.kr)		
Biosystems & Bioengineering	○	○	×
	Professor in charge : Kwon, Ohsuk (042-860-4459, oskwon@kribb.re.kr)		
Green Chemistry and Environmental Biotechnology	○	○	×
	Professor in charge : Lee Chul Wee (042-860-7381, chulwee@kribb.re.kr)		

[note] Professor to each major

- Search through UST Homepage (<http://www.ust.ac.kr>)

[way to find : UST Homepage > Campus/Major > searching by campus or major]

8. Korea Research Institute of Bioscience & Biotech

<http://www.kribb.re.kr>

Major	Professor	Research Field	E-mail	Note
Nanobiotechnology	Kim, Moonil	Biosensor	kimm@kribb.re.kr	
	Chung, Bong Hyun	Biochip/Biosensor, Nanomedicine	chungbh@kribb.re.kr	
Bioinformatics	Young Joo Kim	Systems Biology	yjkim8@kribb.re.kr	
Bioprocess Engineering	Lee EunGyo	Process development for biologics production	eglee@kribb.re.kr	
Bio-Analytical Science	Kang Sung Hyun	Proteomics	skang@kribb.re.kr	
Biomolecular Science	Kim, Chang-Jin	Microbial exploitation	changjin@kribb.re.kr	
	Sun Hong Kim	Cell signal transduction Drug discovery	sunhong@kribb.re.kr	
Biosystems & Bioengineering	Sohn Jung-Hoon	Yeast and Bioenergy	sohn4090@kribb.re.kr	
	Kwon, Ohsuk	Functional genomic study of microbial metabolic/ signal transduction networks and synthetic biological cell remodeling	oskwon@kribb.re.kr	
	Poo Haryoung	Vaccine/ Immune	haryoung@kribb.re.kr	
	Oh, Doo-Byoung	Glycobiology, Protein engineering	dboh@kribb.re.kr	
Green Chemistry and Environmental Biotechnology	Hee-Sik Kim	Microalgae-based Bioenergy	hkim@kribb.re.kr	



9. Korea Institute of Energy Research

<http://www.kier.re.kr>



- Admission Plan for each Major

(○: opening to admission)

Major	Program		
	Doctoral	Integrative	Master
Advanced Energy Technology	○	○	○
	Professor in charge : Kim, Jae Ho (042-860-3351, jaeho@kier.re.kr)		
Energy System Engineering	○	○	○
	Professor in charge : Park Byung Sik (042-860-3323, bspark@kier.re.kr)		
Renewable Energy Engineering	○	○	○
	Professor in charge : Lee Euy-Joon (042-860-3514, ejlee@kier.re.kr)		

[note] Professor to each major

• Search through UST Homepage (<http://www.ust.ac.kr>)

[way to find : UST Homepage > Campus/Major > searching by campus or major]

Major	Professor	Research Field	E-mail	Note
Advanced Energy Technology	Gu-Gon Park	Fuel Cells (Electrocatalyst)	gugon@kier.re.kr	
Energy System Engineering	Dong Sang Keun	advanced combustion system	skdong@kier.re.kr	
	Park Byung Sik	ORC Generator, Combined Heat and Power, District Heating and Cooling	bspark@kier.re.kr	



10. Korea Atomic Energy Research Institute

<http://www.kaeri.re.kr>



- Admission Plan for each Major

(○: opening to admission)

Major	Program		
	Doctoral	Integrative	Master
Accelerator and Beam Nano Engineering	○	○	○
	Professor in charge : Yong Sub Cho (042-868-2881, choys@kaeri.re.kr)		
Science and Technology Policy	○	○	○
	Professor in charge : Lee Byung Min (042-865-2306, leebm@ust.ac.kr)		
Radiation Measurement and Radiation Safety	○	○	○
	Professor in charge : YOON JU-YONG (042-868-0260, k153yjy@kins.re.kr)		
Radiation Biotechnology and Applied Radioisotope Science	○	○	○
	Professor in charge : Kim In Gyu (042-868-8031, igkim@kaeri.re.kr)		
Advanced Nuclear System Engineering	○	○	○
	Professor in charge : Song, Chul-Hwa (042-868-8876, chsong@kaeri.re.kr)		
Quantum Energy Chemical Engineering	○	○	○
	Professor in charge : Paek Seung Woo (042-868-8099, swpaek@kaeri.re.kr)		

[note] Professor to each major

- Search through UST Homepage (<http://www.ust.ac.kr>)

[way to find : UST Homepage > Campus/Major > searching by campus or major]

Major	Professor	Research Field	E-mail	Note
Accelerator and Beam Nano Engineering	Lee, Byung Cheol	Electron Accelerator and Beam Applications	bclee4@kaeri.re.kr	
Radiation Biotechnology and Applied Radioisotope Science	Park Sang Hyun	Radiation and isotope biosciences	parksh@kaeri.re.kr	
	Kim, Jin Kyu	Radiation Biotechnology	jkkim@kaeri.re.kr	
Advanced Nuclear System Engineering	Song, JinHo	Severe Accident Analysis and Experiment	dosa@kaeri.re.kr	

11. Korea Institute of Radiological & Medical Sciences <http://www.kirams.re.kr>



KOREA INSTITUTE OF
RADIOLOGICAL & MEDICAL SCIENCES

- Admission Plan for each Major

(○: opening to admission)

Major	Program		
	Doctoral	Integrative	Master
Radiological Cancer Medicine	○	○	○
	Professor in charge : Ji, Young-Hoon (02-970-1371, jyh328@kirams.re.kr)		

[note] Professor to each major

• Search through UST Homepage (<http://www.ust.ac.kr>)

[way to find : UST Homepage > Campus/Major > searching by campus or major]

Major	Professor	Research Field	E-mail	Note
Radiological Cancer Medicine	Lee Jin Kyung	Radiological Cancer Medicine	jkleee@kirams.re.kr	



12. Korea Electrotechnology Research Institute

<http://www.keri.re.kr>



- Admission Plan for each Major

(○: opening to admission)

Major	Program		
	Doctoral	Integrative	Master
Energy and Power Conversion Engineering	○	○	○
	Professor in charge : Ryoo Hong Je (055-280-1455, hjryoo@keri.re.kr)		

[note] Professor to each major

- Search through UST Homepage (<http://www.ust.ac.kr>)
[way to find : UST Homepage > Campus/Major > searching by campus or major]



13. Electronics and Telecommunications Research Institute

<http://www.etri.re.kr>


- Admission Plan for each Major

(○: opening to admission)

Major	Program		
	Doctoral	Integrative	Master
Science and Technology Policy	○	○	○
	Professor in charge : Lee Byung Min (042-865-2306, leebm@ust.ac.kr)		
Broadband Network Technology	○	○	○
	Professor in charge : Byung Jun Ahn (042-860-5510, bjahn@etri.re.kr)		
Mobile communication & Digital Broadcasting Engineering	○	○	○
	Professor in charge : Mun- Geon Kyeong (042-860-1150, mgk@etri.re.kr)		
Information Security Engineering	○	○	○
	Professor in charge : Jang- Hee Yoo (042-860-1324, jhy@etri.re.kr)		
Information and Communications Technology Management	○	○	○
	Professor in charge : Lee Seong Koog (042-860-6068, leesg@etri.re.kr)		
Advanced Device Technology	○	○	○
	Professor in charge : Moongyu Jang (042-860-1896, jangmg@etri.re.kr)		
Computer Software	○	○	○
	Professor in charge : Pyeong Soo Mah (042-860-6559, pmah@etri.re.kr)		

[note] Professor to each major

- Search through UST Homepage (<http://www.ust.ac.kr>)
[way to find : UST Homepage > Campus/Major > searching by campus or major]

13. Electronics and Telecommunications Research Institute <http://www.etri.re.kr>

Major	Professor	Research Field	E-mail	Note
Advanced Device Technology	Do Lee Mi	Flexible electronics and materials	domi@etri.re.kr	
	Ju Jung Jin	Quantum communication & LASER	jju@etri.re.kr	
	Choi Choon-Gi	Meta material, Graphene electronics	cgchoi@etri.re.kr	
	Kim Hyun Tak	Metal-Insulator Transition (MIT)	htkim@etri.re.kr	
Computer Software	Ahn Chang Won	Big Data Analysis	ahn@etri.re.kr	

14. Korea Astronomy & Space Science Institute

<http://www.kasi.re.kr>



- Admission Plan for each Major

(○: opening to admission)

Major	Program		
	Doctoral	Integrative	Master
Astronomy and Space Science	×	○	○
	Professor in charge : Kwak, Young-Sil (042-865-2069, yskwak@kasi.re.kr)		

[note] Professor to each major

- Search through UST Homepage (<http://www.ust.ac.kr>)
[way to find : UST Homepage > Campus/Major > searching by campus or major]



15. Korea Railroad Research Institute

<http://www.krri.re.kr>



- Admission Plan for each Major

(○: opening to admission)

Major	Program		
	Doctoral	Integrative	Master
Virtual Engineering	○	○	○
	Professor in charge : Hwang Ho Young (032-850-0463, hyhwang@kitech.re.kr)		
Transportation and Logistics System & ITS Engineering	○	○	○
	Professor in charge : Hong Soon- Heum (031-460-5481, shong@krri.re.kr)		
Railway System Engineering	○	○	○
	Professor in charge : SEO, SUNG IL (031-460-5623, siseo@krri.re.kr)		

[note] Professor to each major

- Search through UST Homepage (<http://www.ust.ac.kr>)

[way to find : UST Homepage > Campus/Major > searching by campus or major]

Major	Professor	Research Field	E-mail	Note
Railway System Engineering	Lee Il Wha	Railway Track and Foundation	iwlee@krri.re.kr	
	Kim Dae Sang	Railway System Eng.	kds@krri.re.kr	
	Han Young-Jae	Railway Electrical Eng.	yjhan@krri.re.kr	
	Wonhee You	Railway System Eng. (Control and Noise & Vibration)	whyou@krri.re.kr	
	SEO, SUNG IL	Rolling Stock	siseo@krri.re.kr	



16. Korea Institute of Oriental Medicine

<http://www.kiom.re.kr>



- Admission Plan for each Major

(○: opening to admission)

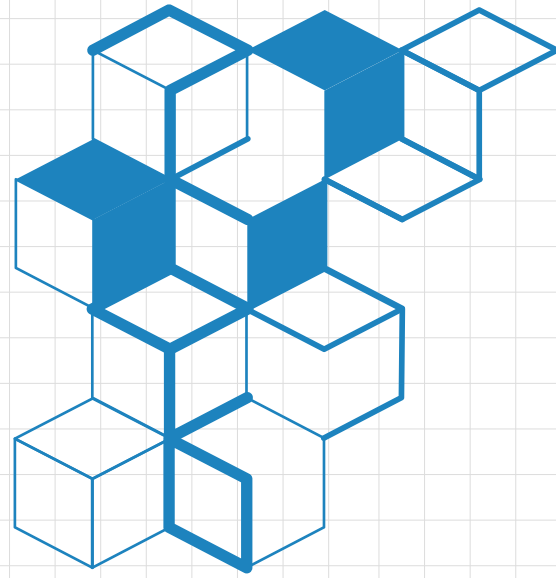
Major	Program		
	Doctoral	Integrative	Master
Korean Medicine Life Science	○	○	○
	Professor in charge : Kim, Jin Sook (042-868-9465, jskim@kiom.re.kr)		

[note] Professor to each major

- Search through UST Homepage (<http://www.ust.ac.kr>)

[way to find : UST Homepage > Campus/Major > searching by campus or major]





The Major List of Admission Plan of each Campus

Admission in Spring semester, 2015
Special Admission-Foreigners

1. Korea Polar Research Institute

<http://www.kopri.re.kr>



Korea Polar Research Institute

- Admission Plan for each Major

(○: opening to admission)

Major	Program		
	Doctoral	Integrative	Master
Polar Science	○	○	○
	Professor in charge : Park Hyun (032-260-6151, hpark@kopri.re.kr)		

[note] Professor to each major

• Search through UST Homepage (<http://www.ust.ac.kr>)

[way to find : UST Homepage > Campus/Major > searching by campus or major]



2. University of Science and Technology (Headquarter) <http://www.ust.ac.kr>



- Campus Representative Professor

(○: opening to admission)

Major	Program		
	Doctoral	Integrative	Master
Science and Technology Policy	○	○	○
	Professor in charge : Lee Byung Min (042-865-2306, leebm@ust.ac.kr)		

[note] Professor to each major

- Search through UST Homepage (<http://www.ust.ac.kr>)
[way to find : UST Homepage > Campus/Major > searching by campus or major]



3. Korea Institute of Materials Science

<http://www.kims.re.kr>



- Admission Plan for each Major

(○: opening to admission)

Major	Program		
	Doctoral	Integrative	Master
Advanced Materials Engineering	○	○	○
	Professor in charge : Chul-jin Choi (055-280-3532, cjchoi@kims.re.kr)		

[note] Professor to each major

- Search through UST Homepage (<http://www.ust.ac.kr>)
[way to find : UST Homepage > Campus/Major > searching by campus or major]

Major	Professor	Research Field	E-mail	Note
Advanced Materials Engineering	Dong-Ho Kim	Thin film solar cells, Molecule sensing materials and devices, Nano electronic materials and devices	dhkim2@kims.re.kr	
	Wonoh Lee	Carbon-nanomaterials, Carbon-nanomaterial based energy generation and storage device, Carbon-nanomaterial based organic FET device and sensor	wonohlee@kims.re.kr	
	Bong Sun You	New Processing Technology for the Mg Alloys	bsyou@kims.re.kr	
	Jeon Jae-Ho	Electronic Ceramics	jhjeon2004@gmail.com	



4. Korea Institute of Construction Technology

<http://www.kict.re.kr>



- Admission Plan for each Major

(○: opening to admission)

Major	Program		
	Doctoral	Integrative	Master
Construction Environment Engineering	○	○	○
	Professor in charge : Kim, Hyeon-jun (031-910-0266, hjkim@kict.re.kr)		
Transportation and Logistics System & ITS Engineering	○	○	○
	Professor in charge : Hong Soon- Heum (031-460-5481, shong@krri.re.kr)		
Geotechnical & Geo-Space Engineering	○	○	○
	Professor in charge : Choi, Changho (031-910-0785, chchoi@kict.re.kr)		

[note] Professor to each major

- Search through UST Homepage (<http://www.ust.ac.kr>)

[way to find : UST Homepage > Campus/Major > searching by campus or major]

Major	Professor	Research Field	E-mail	Note
Construction Environment Engineering	Kim, Hyeon-jun	Water resources/hydrology	hjkim@kict.re.kr	
	Kim, Kwang Soo	Bio-polymer for wastewater treatment	kskim@kict.re.kr	
	Joo, Jin Chul	Converged reactive contaminated soil and groundwater	jcjoo@kict.re.kr	
	Lee Hyun Dong	Water distribution and their networks	hdlee@kict.re.kr	
	Kim Ree Ho	Low impact development and green infrastructure	rhkim@kict.re.kr	
	Hosang Ahn	Nano-material for environment application	hahn@kict.re.kr	
Geotechnical & Geo-Space Engineering	Choi, Changho	Soil Improvement and Offshore Geotechnical Engineering	chchoi@kict.re.kr	
	Han, Jin-Tae	Soil dynamic and Geotechnical Earthquake Engineering	jimmyhan@kict.re.kr	

5. Korea Institute of Science & Technology

<http://www.kist.re.kr>



- Admission Plan for each Major

(○: opening to admission)

Major	Program		
	Doctoral	Integrative	Master
HCI & Robotics	○	○	○
	Professor in charge : Ahn, Sang Chul (02-958-5777, asc@imrc.kist.re.kr)		
Construction Environment Engineering	○	○	○
	Professor in charge : Kim, Hyeon-jun (031-910-0266, hjkim@kict.re.kr)		
Science and Technology Policy	○	○	○
	Professor in charge : Lee Byung Min (042-865-2306, leebm@ust.ac.kr)		
Nanomaterials Science and Engineering	○	○	○
	Professor in charge : YoungWhan Cho (02-958-5465, oze@kist.re.kr)		
Biological Chemistry	○	○	○
	Professor in charge : Hyunah Choo (02-958-5157, hchoo@kist.re.kr)		
Biomolecular Science	○	○	○
	Professor in charge : Byoung Mog Kwon (042-860-4100, kwonbm@kribb.re.kr)		
Neuroscience	○	○	○
	Professor in charge : Cho Jei Won (02-958-6955, jeiwon@kist.re.kr)		
Human and Environmental Toxicology	○	○	○
	Professor in charge : Chang-Woo Song (063-570-8100, cwsong@kitox.re.kr)		
Energy and Environmental Engineering	○	○	○
	Professor in charge : Gwi-Nam Bae (02-958-5676, gnbae@kist.re.kr)		
Biomedical Engineering	○	○	○
	Professor in charge : Park Kwi Deok (02-958-5288, kpark@kist.re.kr)		
Green Process and System Engineering	○	○	○
	Professor in charge : SANG YONG KIM (041-589-8356, sykim@kitech.re.kr)		
Clean Energy and Chemical Engineering	○	○	○
	Professor in charge : Lee Hyun Joo (02-958-5868, hjlee@kist.re.kr)		

[note] Professor to each major

• Search through UST Homepage (<http://www.ust.ac.kr>)

[way to find : UST Homepage > Campus/Major > searching by campus or major]

6. Korea Institute of Science & Technology Information

<http://www.kisti.re.kr>



- Admission Plan for each Major

(○: opening to admission)

Major	Program		
	Doctoral	Integrative	Master
Science and Technology Policy	○	○	○
	Professor in charge : Lee Byung Min (042-865-2306, leebm@ust.ac.kr)		
Broadband Network Technology	○	○	○
	Professor in charge : Byung Jun Ahn (042-860-5510, bjahn@etri.re.kr)		
Grid and Supercomputing	○	○	○
	Professor in charge : Jysoo Lee (042-869-0591, jysoo@kisti.re.kr)		
Big Data Science	○	○	○
	Professor in charge : Hahn Sun Hwa (042-869-1010, shhahn@kisti.re.kr)		
Knowledge and Information Science	○	○	○
	Professor in charge : Moon, Yeongho (02-3299-6090, yhmoon@kisti.re.kr)		

[note] Professor to each major

- Search through UST Homepage (<http://www.ust.ac.kr>)

[way to find : UST Homepage > Campus/Major > searching by campus or major]

Major	Professor	Research Field	E-mail	Note
Grid and Supercomputing	Lee, Jong-suk Ruth	Web-based Computing, HPC Computing, Large Scale Data Management	jsruthlee@kisti.re.kr	
Big Data Science	Jung, Han Min	Big Data Analytics Infra	jhm@kisti.re.kr	
	Sa-kwang Song	Big Data Processing and Analytics	esmallj@kisti.re.kr	

7. Korea Institute of Machinery & Materials

<http://www.kimm.re.kr>



**KOREA INSTITUTE
MACHINERY & MATERIALS**

- Admission Plan for each Major

(○: opening to admission)

Major	Program		
	Doctoral	Integrative	Master
Nano-Mechatronics	○	○	○
	Professor in charge : Jae Jong Lee (042-868-7145, jjlee@kimm.re.kr)		
Nanobiotechnology	○	○	○
	Professor in charge : CHUNG, BONG HYUN (042-860-4442, chungbh@kribb.re.kr)		
Plant System and Machinery	○	○	○
	Professor in charge : Myungbae Kim (042-868-7340, mbkim@kimm.re.kr)		
Environment & Energy Mechanical Engineering	×	○	○
	Professor in charge : Oh, Seungmook (042-868-7382, mook@kimm.re.kr)		

[note] Professor to each major

- Search through UST Homepage (<http://www.ust.ac.kr>)

[way to find : UST Homepage > Campus/Major > searching by campus or major]

Major	Professor	Research Field	E-mail	Note
Nano-Mechatronics	Jae-Hyun Kim	Nano-mechanics and mechanical applications of 2-dimensional nano-materials	jaehkim@kimm.re.kr	
	Hwang Joo Ho	Simulation for manufacturing machin	jooho@kimm.re.kr	
Environment & Energy Mechanical Engineering	Kookyong Ahn	Gas Turbine Combustion Technology	kyahn@kimm.re.kr	
	Sanggyu Kang	Fuel Cell System	kyu2613@kimm.re.kr	
	Oh, Seungmook	Advanced Engine Combustion	mook@kimm.re.kr	

8. Korea Research Institute of Bioscience & Biotech

<http://www.kribb.re.kr>

 Korea Research Institute of
Bioscience & Biotechnology

- Admission Plan for each Major

(○: opening to admission)

Major	Program		
	Doctoral	Integrative	Master
Nanobiotechnology	○	○	×
	Professor in charge : CHUNG, BONG HYUN(042-860-4442, chungbh@kribb.re.kr)		
Bioinformatics	○	○	×
	Professor in charge : Chu, In-Sun (042-879-8520, chu@kribb.re.kr)		
Bioprocess Engineering	○	○	×
	Professor in charge : LEE, Hong Weon (042-365-5393, hwlee@kribb.re.kr)		
Bio-Analytical Science	○	○	×
	Professor in charge : Kim Seung Il (042-865-3451, ksi@kbsi.re.kr)		
Biomolecular Science	○	○	×
	Professor in charge : Byoung Mog Kwon (042-860-4100, kwonbm@kribb.re.kr)		
Biosystems & Bioengineering	○	○	×
	Professor in charge : Kwon, Ohsuk (042-860-4459, oskwon@kribb.re.kr)		
Green Chemistry and Environmental Biotechnology	○	○	×
	Professor in charge : Lee Chul Wee (042-860-7381, chulwee@kribb.re.kr)		

[note] Professor to each major

 • Search through UST Homepage (<http://www.ust.ac.kr>)

[way to find : UST Homepage > Campus/Major > searching by campus or major]

8. Korea Research Institute of Bioscience & Biotech

<http://www.kribb.re.kr>

Major	Professor	Research Field	E-mail	Note
Bioinformatics	Young Joo Kim	Systems Biology	yjkim8@kribb.re.kr	
Bio-Analytical Science	Kang Sung Hyun	Proteomics	skang@kribb.re.kr	
Biomolecular Science	Kim, Chang-Jin	Microbial exploitation	changjin@kribb.re.kr	
	Sun Hong Kim	Cell signal transduction Drug discovery	sunhong@kribb.re.kr	
Biosystems & Bioengineering	Sohn Jung-Hoon	Yeast and Bioenergy	sohn4090@kribb.re.kr	
	Kwon, Ohsuk	Functional genomic study of microbial metabolic/ signal transduction networks and synthetic biological cell remodeling	oskwon@kribb.re.kr	
	Oh, Doo-Byoung	Glycobiology, Protein engineering	dboh@kribb.re.kr	
Green Chemistry and Environmental Biotechnology	Hee-Sik Kim	Microalgae-based Bioenergy	hkim@kribb.re.kr	



9. Korea Institute of Industrial Technology

<http://www.kitech.re.kr>



- Admission Plan for each Major

(○: opening to admission)

Major	Program		
	Doctoral	Integrative	Master
Virtual Engineering	×	○	○
	Professor in charge : Hwang Ho Young (032-850-0463, hyhwang@kitech.re.kr)		
Nanobiotechnology	○	○	○
	Professor in charge : CHUNG, BONG HYUN (042-860-4442, chungbh@kribb.re.kr)		
Energy System Engineering	○	○	○
	Professor in charge : Park Byung Sik (042-860-3323, bspark@kier.re.kr)		
Electronic Packaging Engineering	×	○	○
	Professor in charge : Kim, Jun Ki (032-850-0221, jkim@kitech.re.kr)		
Intelligent Robot Engineering	○	○	○
	Professor in charge : Ryuh young Sun (031-8040-6381, ysryuh@kitech.re.kr)		
Green Process and System Engineering	○	○	○
	Professor in charge : SANG YONG KIM (041-589-8356, sykim@kitech.re.kr)		
Rare Metals Engineering	○	○	○
	Professor in charge : TAEK-SOO KIM (032-850-0409, tskim@kitech.re.kr)		

[note] Professor to each major

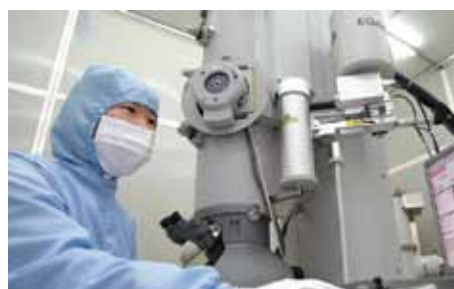
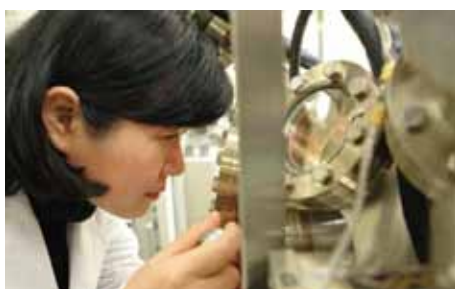
- Search through UST Homepage (<http://www.ust.ac.kr>)

[way to find : UST Homepage > Campus/Major > searching by campus or major]

9. Korea Institute of Industrial Technology

<http://www.kitech.re.kr>

Major	Professor	Research Field	E-mail	Note
Nanobio technology	SungHo Lee	BioMEMS Engineering	memslee@kitech.re.kr	
Energy System Engineering	Kwon Oh-Kyung	Thermal & Fluid / HVAC	kwonok@kitech.re.kr	
Green Process and System Engineering	Shin, Seunghan	polymer/polymer composite	shshin@kitech.re.kr	
	Kim, Yong Jin	catalysis for CO2 conversion	yjkim2005@gmail.com	
	DOHOON LEE	Biocatalyst and Bioprocess	david@kitech.re.kr	
	KIM BAEK JIN	polymer synthesis and properties	bjkim@kitech.re.kr	
	Lee, Uen Do	Thermochemical conversion of low rank fuel	uendol@kitech.re.kr	
	Cho, Jin Ku	Bio-based fuels/chemicals	jkcho@kitech.re.kr	
	Yang Won	Low-carbon combustion in coal power generation	yangwon@kitech.re.kr	
	SANG YONG KIM	biorefinery and green engineering	sykim@kitech.re.kr	



10. Korea Food Research Institute

<http://www.kfri.re.kr>



- Admission Plan for each Major

(○: opening to admission)

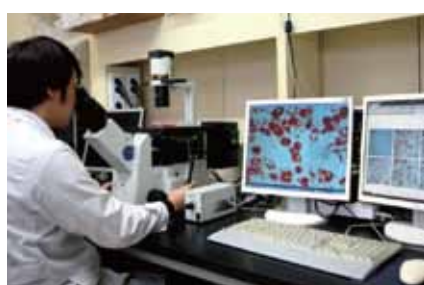
Major	Program		
	Doctoral	Integrative	Master
Food Biotechnology	○	○	○
	Professor in charge : Ha Tae Youl (031-780-9054, tyhap@kfri.re.kr)		

[note] Professor to each major

- Search through UST Homepage (<http://www.ust.ac.kr>)

[way to find : UST Homepage > Campus/Major > searching by campus or major]

Major	Professor	Research Field	E-mail	Note
Food Biotechnology	Sang-Hoon Lee	Marine nutraceutical	shnlee@kfri.re.kr	
	SUNG KEUN JUNG	Functional food	skjung@kfri.re.kr	
	Yun-JI Kim	Food Safety	yunji@kfri.re.kr	



11. Korea Institute of Energy Research

<http://www.kier.re.kr>



- Admission Plan for each Major

(○: opening to admission)

Major	Program		
	Doctoral	Integrative	Master
Advanced Energy Technology	○	○	○
	Professor in charge : Kim, Jae Ho (042-860-3351, jaeho@kier.re.kr)		
Energy System Engineering	○	○	○
	Professor in charge : Park Byung Sik (042-860-3323, bspark@kier.re.kr)		
Renewable Energy Engineering	○	○	○
	Professor in charge : Lee Euy-Joon (042-860-3514, ejlee@kier.re.kr)		

[note] Professor to each major

• Search through UST Homepage (<http://www.ust.ac.kr>)

[way to find : UST Homepage > Campus/Major > searching by campus or major]

Major	Professor	Research Field	E-mail	Note
Energy System Engineering	Dong Sang Keun	Plasma application	skdong@kier.re.kr	
	Park Byung Sik	ORC Generator, Combined Heat and Power, District Heating and Cooling	bspark@kier.re.kr	



12. Korea Atomic Energy Research Institute

<http://www.kaeri.re.kr>



- Admission Plan for each Major

(○: opening to admission)

Major	Program		
	Doctoral	Integrative	Master
Accelerator and Beam Nano Engineering	○	×	×
	Professor in charge : Yong Sub Cho (042-868-2881, choys@kaeri.re.kr)		
Science and Technology Policy	○	○	○
	Professor in charge : Lee Byung Min (042-865-2306, leebm@ust.ac.kr)		
Radiation Measurement and Radiation Safety	○	○	○
	Professor in charge : YOON JU-YONG (042-868-0260, k153yjy@kins.re.kr)		
Radiation Biotechnology and Applied Radioisotope Science	○	○	○
	Professor in charge : Kim In Gyu (042-868-8031, igkim@kaeri.re.kr)		
Advanced Nuclear System Engineering	×	○	×
	Professor in charge : Song, Chul-Hwa (042-868-8876, chsong@kaeri.re.kr)		
Quantum Energy Chemical Engineering	○	○	○
	Professor in charge : Paek Seung Woo (042-868-8099, swpaek@kaeri.re.kr)		

[note] Professor to each major

• Search through UST Homepage (<http://www.ust.ac.kr>)

[way to find : UST Homepage > Campus/Major > searching by campus or major]

Major	Professor	Research Field	E-mail	Note
Accelerator and Beam Nano Engineering	Lee, Byung Cheol	Electron Accelerator and Beam Applications	bcle4@kaeri.re.kr	
Radiation Biotechnology and Applied Radioisotope Science	Park Sang Hyun	Radiation and isotope biosciences	parksh@kaeri.re.kr	
	Kim, Jin Kyu	Radiation Biotechnology	jkim@kaeri.re.kr	
Advanced Nuclear System Engineering	Song, JinHo	Severe Accident Analysis and Experiment	dosa@kaeri.re.kr	

13. Korea Electrotechnology Research Institute

<http://www.keri.re.kr>



- Admission Plan for each Major

(○: opening to admission)

Major	Program		
	Doctoral	Integrative	Master
Energy and Power Conversion Engineering	○	○	○
	Professor in charge : Ryoo Hong Je (055-280-1455, hjryoo@keri.re.kr)		
Electrical Functionality Material Engineering	○	○	○
	Professor in charge : Jeong, Dae Yeong (055-280-1671, dyleong@keri.re.kr)		

[note] Professor to each major

- Search through UST Homepage (<http://www.ust.ac.kr>)

[way to find : UST Homepage > Campus/Major > searching by campus or major]



14. Electronics and Telecommunications Research Institute

<http://www.etri.re.kr>


- Admission Plan for each Major

(○: opening to admission)

Major	Program		
	Doctoral	Integrative	Master
Science and Technology Policy	○	○	○
	Professor in charge : Lee Byung Min (042-865-2306, leebm@ust.ac.kr)		
Advanced Device Technology	○	○	○
	Professor in charge : Moongyu Jang (042-860-1896, jangmg@etri.re.kr)		
Computer Software	○	○	×
	Professor in charge : Pyeong Soo Mah (042-860-6559, pmah@etri.re.kr)		

[note] Professor to each major

• Search through UST Homepage (<http://www.ust.ac.kr>)

[way to find : UST Homepage > Campus/Major > searching by campus or major]

Major	Professor	Research Field	E-mail	Note
Advanced Device Technology	Do Lee Mi	Flexible electronics and materials	domi@etri.re.kr	
	Choi Choon-Gi	Meta material, Graphene electronics	cgchoi@etri.re.kr	
Computer Software	Ahn Chang Won	Big Data Analysis	ahn@etri.re.kr	

15. Korea Institute of Geoscience & Mineral Resources

<http://www.kigam.re.kr>

KIGAM Korea Institute of Geoscience and Mineral Resources

- Admission Plan for each Major

(○: opening to admission)

Major	Program		
	Doctoral	Integrative	Master
Mineral & Groundwater Resources	○	○	○
	Professor in charge : Sang-Mo KOH (042-868-3106, kohsm@kigam.re.kr)		
Geophysical Exploration	○	○	×
	Professor in charge : JUNG, HYUN-KEY (042-868-3180, hkjung@kigam.re.kr)		

[note] Professor to each major

- Search through UST Homepage (<http://www.ust.ac.kr>)
[way to find : UST Homepage > Campus/Major > searching by campus or major]

Major	Professor	Research Field	E-mail	
Mineral & Groundwater Resources	Sang-Mo KOH	Genesis of REE and non-metllic deposits	kohsm@kigam.re.kr	
	Heo, Chul-Ho	Genesis of metllic deposit	chheo@kigam.re.kr	
	Bong Chul Yoo	Geochemistry of ore deposit	chbong@kigam.re.kr	
	Ha, Kyoochul	Mineral & Groundwater Resources	hasife@kigam.re.kr	
	Koh, Dong-Chan	Mineral & Groundwater Resources	chankoh@kigam.re.kr	
	Hyun, Sung Pil	Mineral & Groundwater Resources	sphyun@kigam.re.kr	
	Lee, Ji-Hoon	Mineral & Groundwater Resources	jihoonlee@kigam.re.kr	



16. Korea Astronomy & Space Science Institute

<http://www.kasi.re.kr>



- Admission Plan for each Major

(○: opening to admission)

Major	Program		
	Doctoral	Integrative	Master
Astronomy and Space Science	○	○	×
	Professor in charge : Kwak, Young-Sil (042-865-2069, yskwak@kasi.re.kr)		

[note] Professor to each major

- Search through UST Homepage (<http://www.ust.ac.kr>)
[way to find : UST Homepage > Campus/Major > searching by campus or major]



17. Korea Railroad Research Institute

<http://www.krri.re.kr>



- Admission Plan for each Major

(○: opening to admission)

Major	Program		
	Doctoral	Integrative	Master
Virtual Engineering	○	○	○
	Professor in charge : Hwang Ho Young (032-850-0463, hyhwang@kitech.re.kr)		
Transportation and Logistics System & ITS Engineering	○	○	○
	Professor in charge : Hong Soon- Heum (031-460-5481, shong@krri.re.kr)		
Railway System Engineering	○	○	○
	Professor in charge : SEO, SUNG IL (031-460-5623, siseo@krri.re.kr)		

[note] Professor to each major

• Search through UST Homepage (<http://www.ust.ac.kr>)

[way to find : UST Homepage > Campus/Major > searching by campus or major]

Major	Professor	Research Field	E-mail	Note
Railway System Engineering	Lee Il Wha	Railway Track and Foundation	iwlee@krri.re.kr	
	Han Young-Jae	Railway Electrical Eng.	yjhan@krri.re.kr	
	SEO, SUNG IL	Rolling Stock	siseo@krri.re.kr	



18. Korea Research Institute of standards and Science <http://www.kriss.re.kr>



- Admission Plan for each Major

(○: opening to admission)

Major	Program		
	Doctoral	Integrative	Master
Nano Science	×	○	×
	Professor in charge : Jinhee Kim (042-868-5154, jinhee@kriss.re.kr)		
Medical Physics	○	○	×
	Professor in charge : Chun Kook Jin (042-868-5374, chunkj@kriss.re.kr)		
Advanced Device Technology	○	○	○
	Professor in charge : Park Seung Nam (042-868-5200, snpark@kriss.re.kr)		
Science of Measurement	○	○	○
	Professor in charge : Park Seung Nam (042-868-5200, snpark@kriss.re.kr)		

[note] Professor to each major

- Search through UST Homepage (<http://www.ust.ac.kr>)
[way to find : UST Homepage > Campus/Major > searching by campus or major]

Major	Professor	Research Field	E-mail	Note
Nano Science	Jinhee Kim	Nano materials Energy materials	jinhee@kriss.re.kr	
Advanced Device Technology	Kang SangWoo	The development of advanced device tech. using vacuum systems.	swkang@kriss.re.kr	
Medical Physics	Yi Chul Young	Dosimetry	cyyi@kriss.re.kr	
Science of Measurement	Park Seung Nam	Impedance measurements, magnetics measurements	snpark@kriss.re.kr	

19. Korea Institute of Oriental Medicine

<http://www.kiom.re.kr>



- Admission Plan for each Major

(○: opening to admission)

Major	Program		
	Doctoral	Integrative	Master
Korean Medicine Life Science	○	○	○
	Professor in charge : Kim, Jin Sook (042-868-9465, jskim@kiom.re.kr)		

[note] Professor to each major

- Search through UST Homepage (<http://www.ust.ac.kr>)
[way to find : UST Homepage > Campus/Major > searching by campus or major]



20. Korea Institute Of Ocean Science & Technology

<http://www.kiost.ac.kr>



- Admission Plan for each Major

(○: opening to admission)

Major	Program		
	Doctoral	Integrative	Master
Marine Biotechnology	○	×	×
	Professor in charge : Lee, Jung-Hyun (031-400-6243, jlee@kiost.ac)		
Marine Information and Communication Engineering	×	×	○
	Professor in charge : Seung-Geun Kim (042-866-3832, sgkim@moeri.re.kr)		

[note] Professor to each major

- Search through UST Homepage (<http://www.ust.ac.kr>)
[way to find : UST Homepage > Campus/Major > searching by campus or major]

Major	Professor	Research Field	E-mail	Note
Marine Biotechnology	Shin, Hee Jae	Marine Natural Products Chemistry	shinhj@kiost.ac	
Marine Information and Communication Engineering	Yun Changho	Maritime shipborne networks / underwater networks	sgn0178@kriso.re.kr	



21. Korea Research Institute of Chemical Technology

<http://www.krict.re.kr>


- Admission Plan for each Major

(○: opening to admission)

Major	Program		
	Doctoral	Integrative	Master
Nanomaterials Science and Engineering	○	○	○
	Professor in charge : YoungWhan Cho (02-958-5465, oze@kist.re.kr)		
Medicinal and Pharmaceutical Chemistry	○	○	○
	Professor in charge : Yi Kyu Yang (042-860-7143, kyyi@krict.re.kr)		
Green Chemistry and Environmental Biotechnology	○	○	○
	Professor in charge : Lee Chul Wee (042-860-7381, chulwee@krict.re.kr)		
Chemical Convergence Materials	○	○	○
	Professor in charge : Jinsoo Kim (042-860-7663, jinsoo@krict.re.kr)		

[note] Professor to each major

- Search through UST Homepage (<http://www.ust.ac.kr>)

[way to find : UST Homepage > Campus/Major > searching by campus or major]

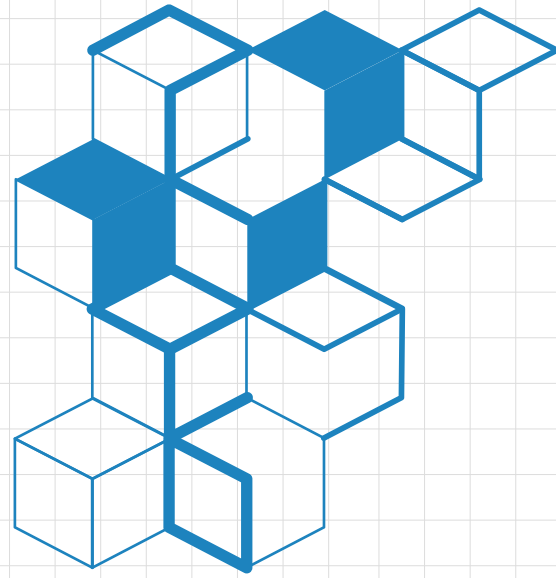
Major	Professor	Research Field	E-mail	Note
Medicinal and Pharmaceutical Chemistry	SUNG-HOON AHN	Pharmaceutical science	ahns@krict.re.kr	
	Young-Sik Jung	medicinal chemistry	ysjung@krict.re.kr	
	Ahn, Sunjoo	Pharmacokinetics	sahn@krict.re.kr	
	Jin hee Ahn	Drug discovery (diabetesandobesity)	jhahn@krict.re.kr	
	Hwan Jung LIM	organic chemistry and medicinal chemistry	indium@krict.re.kr	
	Kwangho Lee	Medicinal and Pharmaceutical Chemistry	kwangho@krict.re.kr	
	Jong Yeon Hwang	Anti-Cancer	jyhwang@krict.re.kr	
	Sung Yun Cho	Organic synthesis medicinalchemistry anti-cancertherapeutics	sycho@krict.re.kr	

21. Korea Research Institute of Chemical Technology

<http://www.krict.re.kr>

Major	Professor	Research Field	E-mail	Note
Green Chemistry and Environmental Biotechnology	JIN-OOK BAEG	Artificial photosynthesis & Development of the photo-bio system	jobaeg@krict.re.kr	
	Lee Chul Wee	Upgrading of heavy oil	chulwee@krict.re.kr	
	Park Soo Youl	Chemical engineering	sypark@krict.re.kr	
	LEE Kee-In	Asymmetric catalysis	kilee@krict.re.kr	
Chemical Convergence Materials	Won Suk Shin	Organic Electronic Materials and Devices	shinws@krict.re.kr	





The Major List of Admission Plan of each Campus

Admission in Spring semester, 2015
Special Admission-Koreans Living Overseas

1. Korea Polar Research Institute

<http://www.kopri.re.kr>



Korea Polar Research Institute

- Admission Plan for each Major

(○: opening to admission)

Major	Program		
	Doctoral	Integrative	Master
Polar Science	○	○	○
	Professor in charge : Park Hyun (032-260-6151, hpark@kopri.re.kr)		

[note] Professor to each major

- Search through UST Homepage (<http://www.ust.ac.kr>)

[way to find : UST Homepage > Campus/Major > searching by campus or major]



2. University of Science and Technology (Headquarter) <http://www.ust.ac.kr>



- Admission Plan for each Major

(○: opening to admission)

Major	Program		
	Doctoral	Integrative	Master
Science and Technology Policy	○	○	○
	Professor in charge : Lee Byung Min (042-865-2306, leebm@ust.ac.kr)		

[note] Professor to each major

- Search through UST Homepage (<http://www.ust.ac.kr>)
[way to find : UST Homepage > Campus/Major > searching by campus or major]



3. Korea Institute of Materials Science

<http://www.kims.re.kr>



- Admission Plan for each Major

(○: opening to admission)

Major	Program		
	Doctoral	Integrative	Master
Advanced Materials Engineering	○	○	○
	Professor in charge : Chul-jin Choi (055-280-3532, cjchoi@kims.re.kr)		

[note] Professor to each major

- Search through UST Homepage (<http://www.ust.ac.kr>)
[way to find : UST Homepage > Campus/Major > searching by campus or major]

Major	Professor	Research Field	E-mail	Note
Advanced Materials Engineering	Dong-Ho Kim	Thin film solar cells, Molecule sensing materials and devices, Nano electronic materials and devices	dhkim2@kims.re.kr	
	Wonoh Lee	Carbon-nanomaterials, Carbon-nanomaterial based energy generation and storage device, Carbon-nanomaterial based organic FET device and sensor	wonohlee@kims.re.kr	
	Bong Sun You	New Processing Technology for the Mg Alloys	bsyou@kims.re.kr	
	Jeon Jae-Ho	Electronic Ceramics	jhjeon2004@gmail.com	



4. Korea Institute of Construction Technology

<http://www.kict.re.kr>



- Admission Plan for each Major

(○: opening to admission)

Major	Program		
	Doctoral	Integrative	Master
Transportation and Logistics System & ITS Engineering	○	○	○
	Professor in charge : Hong Soon- Heum (031-460-5481, shong@krri.re.kr)		

[note] Professor to each major

- Search through UST Homepage (<http://www.ust.ac.kr>)

[way to find : UST Homepage > Campus/Major > searching by campus or major]



5. Korea Institute of Science & Technology

<http://www.kist.re.kr>



- Admission Plan for each Major

(○: opening to admission)

Major	Program		
	Doctoral	Integrative	Master
HCI & Robotics	○	○	○
	Professor in charge : Ahn, Sang Chul (02-958-5777, asc@imrc.kist.re.kr)		
Construction Environment Engineering	○	○	○
	Professor in charge : Kim, Hyeon-jun (031-910-0266, hjkim@kict.re.kr)		
Science and Technology Policy	○	○	○
	Professor in charge : Lee Byung Min (042-865-2306, leebm@ust.ac.kr)		
Nanomaterials Science and Engineering	○	○	○
	Professor in charge : YoungWhan Cho (02-958-5465, oze@kist.re.kr)		
Biological Chemistry	○	○	○
	Professor in charge : Hyunah Choo (02-958-5157, hchoo@kist.re.kr)		
Biomolecular Science	○	○	○
	Professor in charge : Byoung Mog Kwon (042-860-4100, kwonbm@kribb.re.kr)		
Neuroscience	○	○	○
	Professor in charge : Cho Jei Won (02-958-6955, jeiwon@kist.re.kr)		
Human and Environmental Toxicology	○	○	○
	Professor in charge : Chang-Woo Song (063-570-8100, cwsong@kitox.re.kr)		
Energy and Environmental Engineering	○	○	○
	Professor in charge : Gwi-Nam Bae (02-958-5676, gnbae@kist.re.kr)		
Biomedical Engineering	○	○	○
	Professor in charge : Park Kwi Deok (02-958-5288, kpark@kist.re.kr)		
Green Process and System Engineering	○	○	○
	Professor in charge : SANG YONG KIM (041-589-8356, sykim@kitech.re.kr)		
Clean Energy and Chemical Engineering	○	○	○
	Professor in charge : Lee Hyun Joo (02-958-5868, hjlee@kist.re.kr)		

[note] Professor to each major

- Search through UST Homepage (<http://www.ust.ac.kr>)

[way to find : UST Homepage > Campus/Major > searching by campus or major]

6. Korea Institute of Science & Technology Information

<http://www.kisti.re.kr>



- Admission Plan for each Major

(○: opening to admission)

Major	Program		
	Doctoral	Integrative	Master
Science and Technology Policy	○	○	○
	Professor in charge : Lee Byung Min (042-865-2306, leebm@ust.ac.kr)		
Broadband Network Technology	○	○	○
	Professor in charge : Byung Jun Ahn (042-860-5510, bjahn@etri.re.kr)		
Grid and Supercomputing	○	○	○
	Professor in charge : Jysoo Lee (042-869-0591, jysoo@kisti.re.kr)		
Big Data Science	○	○	○
	Professor in charge : Hahn Sun Hwa (042-869-1010, shhahn@kisti.re.kr)		
Knowledge and Information Science	○	○	○
	Professor in charge : Moon, Yeongho (02-3299-6090, yhmoon@kisti.re.kr)		

[note] Professor to each major

- Search through UST Homepage (<http://www.ust.ac.kr>)

[way to find : UST Homepage > Campus/Major > searching by campus or major]

Major	Professor	Research Field	E-mail	Note
Grid and Supercomputing	Lee, Jong-suk Ruth	Web-based Computing, HPC Computing, Large Scale Data Management	jsruthlee@kisti.re.kr	
Big Data Science	Jung, Han Min	Big Data Analytics Infra	jhm@kisti.re.kr	
	Sa-kwang Song	Big Data Processing and Analytics	esmallj@kisti.re.kr	

7. Korea Institute of Machinery & Materials

<http://www.kimm.re.kr>



**KOREA INSTITUTE
MACHINERY & MATERIALS**

- Admission Plan for each Major

(○: opening to admission)

Major	Program		
	Doctoral	Integrative	Master
Nano-Mechatronics	○	○	○
	Professor in charge : Jae Jong Lee (042-868-7145, jjlee@kimm.re.kr)		
Nanobiotechnology	○	○	○
	Professor in charge : CHUNG, BONG HYUN (042-860-4442, chungbh@kribb.re.kr)		
Plant System and Machinery	○	○	○
	Professor in charge : Myungbae Kim (042-868-7340, mbkim@kimm.re.kr)		
Environment & Energy Mechanical Engineering	○	○	○
	Professor in charge : Oh, Seungmook (042-868-7382, mook@kimm.re.kr)		

[note] Professor to each major

- Search through UST Homepage (<http://www.ust.ac.kr>)

[way to find : UST Homepage > Campus/Major > searching by campus or major]

Major	Professor	Research Field	E-mail	Note
Nano-Mechatronics	Jae-Hyun Kim	Nano-mechanics and mechanical applications of 2-dimensional nano-materials	jaehkim@kimm.re.kr	
	Hwang Joo Ho	Simulation for manufacturing machin	jooho@kimm.re.kr	
Environment & Energy Mechanical Engineering	Kookyong Ahn	Gas Turbine Combustion Technology	kyahn@kimm.re.kr	
	Sanggyu Kang	Fuel Cell System	kyu2613@kimm.re.kr	
	Oh, Seungmook	Advanced Engine Combustion	mook@kimm.re.kr	

8. Korea Research Institute of Bioscience & Biotech

<http://www.kribb.re.kr>



Korea Research Institute of
Bioscience & Biotechnology

- Admission Plan for each Major

(○: opening to admission)

Major	Program		
	Doctoral	Integrative	Master
Nanobiotechnology	○	○	×
	Professor in charge : CHUNG, BONG HYUN(042-860-4442, chungbh@kribb.re.kr)		
Bioinformatics	○	○	×
	Professor in charge : Chu, In-Sun (042-879-8520, chu@kribb.re.kr)		
Bioprocess Engineering	○	○	×
	Professor in charge : LEE, Hong Weon (042-365-5393, hwlee@kribb.re.kr)		
Bio-Analytical Science	○	○	×
	Professor in charge : Kim Seung Il (042-865-3451, ksi@kbsi.re.kr)		
Biomolecular Science	○	○	×
	Professor in charge : Byoung Mog Kwon (042-860-4100, kwonbm@kribb.re.kr)		
Biosystems & Bioengineering	○	○	×
	Professor in charge : Kwon, Ohsuk (042-860-4459, oskwon@kribb.re.kr)		
Green Chemistry and Environmental Biotechnology	○	○	×
	Professor in charge : Lee Chul Wee (042-860-7381, chulwee@kribb.re.kr)		

[note] Professor to each major

• Search through UST Homepage (<http://www.ust.ac.kr>)

[way to find : UST Homepage > Campus/Major > searching by campus or major]

8. Korea Research Institute of Bioscience & Biotech

<http://www.kribb.re.kr>

Major	Professor	Research Field	E-mail	Note
Bioinformatics	Young Joo Kim	Systems Biology	yjkim8@kribb.re.kr	
Bio-Analytical Science	Kang Sung Hyun	Proteomics	skang@kribb.re.kr	
Biomolecular Science	Kim, Chang-Jin	Microbial exploitation	changjin@kribb.re.kr	
	Sun Hong Kim	Cell signal transduction Drug discovery	sunhong@kribb.re.kr	
Biosystems & Bioengineering	Sohn Jung-Hoon	Yeast and Bioenergy	sohn4090@kribb.re.kr	
	Kwon, Ohsuk	Functional genomic study of microbial metabolic/ signal transduction networks and synthetic biological cell remodeling	oskwon@kribb.re.kr	
	Oh, Doo-Byoung	Glycobiology, Protein engineering	dboh@kribb.re.kr	
Green Chemistry and Environmental Biotechnology	Hee-Sik Kim	Microalgae-based Bioenergy	hkim@kribb.re.kr	



9. Korea Institute of Energy Research

<http://www.kier.re.kr>



- Admission Plan for each Major

(○: opening to admission)

Major	Program		
	Doctoral	Integrative	Master
Advanced Energy Technology	○	○	○
	Professor in charge : Kim, Jae Ho (042-860-3351, jaeho@kier.re.kr)		
Energy System Engineering	○	○	○
	Professor in charge : Park Byung Sik (042-860-3323, bspark@kier.re.kr)		
Renewable Energy Engineering	○	○	○
	Professor in charge : Lee Euy-Joon (042-860-3514, ejlee@kier.re.kr)		

[note] Professor to each major

• Search through UST Homepage (<http://www.ust.ac.kr>)

[way to find : UST Homepage > Campus/Major > searching by campus or major]

Major	Professor	Research Field	E-mail	Note
Energy System Engineering	Dong Sang Keun	Plasma application	skdong@kier.re.kr	
	Park Byung Sik	ORC Generator, Combined Heat and Power, District Heating and Cooling	bspark@kier.re.kr	



10. Korea Atomic Energy Research Institute

<http://www.kaeri.re.kr>



- Admission Plan for each Major

(○: opening to admission)

Major	Program		
	Doctoral	Integrative	Master
Accelerator and Beam Nano Engineering	○	○	○
	Professor in charge : Yong Sub Cho (042-868-2881, choys@kaeri.re.kr)		
Science and Technology Policy	○	○	○
	Professor in charge : Lee Byung Min (042-865-2306, leebm@ust.ac.kr)		
Radiation Measurement and Radiation Safety	○	○	○
	Professor in charge : YOON JU-YONG (042-868-0260, k153yjy@kins.re.kr)		
Radiation Biotechnology and Applied Radioisotope Science	○	○	○
	Professor in charge : Kim In Gyu (042-868-8031, igkim@kaeri.re.kr)		
Advanced Nuclear System Engineering	○	○	○
	Professor in charge : Song, Chul-Hwa (042-868-8876, chsong@kaeri.re.kr)		
Quantum Energy Chemical Engineering	○	○	○
	Professor in charge : Paek Seung Woo (042-868-8099, swpaek@kaeri.re.kr)		

[note] Professor to each major

• Search through UST Homepage (<http://www.ust.ac.kr>)

[way to find : UST Homepage > Campus/Major > searching by campus or major]

Major	Professor	Research Field	E-mail	Note
Accelerator and Beam Nano Engineering	Lee, Byung Cheol	Electron Accelerator and Beam Applications	bcle4@kaeri.re.kr	
Radiation Biotechnology and Applied Radioisotope Science	Park Sang Hyun	Radiation and isotope biosciences	parksh@kaeri.re.kr	
	Kim, Jin Kyu	Radiation Biotechnology	jkim@kaeri.re.kr	
Advanced Nuclear System Engineering	Song, JinHo	Severe Accident Analysis and Experiment	dosa@kaeri.re.kr	

11. Korea Institute of Radiological & Medical Sciences <http://www.kirams.re.kr>



KOREA INSTITUTE OF
RADIOLOGICAL & MEDICAL SCIENCES

- Admission Plan for each Major

(○: opening to admission)

Major	Program		
	Doctoral	Integrative	Master
Radiological Cancer Medicine	○	○	○
	Professor in charge : Ji, Young-Hoon (02-970-1371, jyh328@kirams.re.kr)		

[note] Professor to each major

- Search through UST Homepage (<http://www.ust.ac.kr>)
[way to find : UST Homepage > Campus/Major > searching by campus or major]



12. Korea Electrotechnology Research Institute

<http://www.keri.re.kr>



- Admission Plan for each Major

(○: opening to admission)

Major	Program		
	Doctoral	Integrative	Master
Energy and Power Conversion Engineering	○	○	○
	Professor in charge : Ryoo Hong Je (055-280-1455, hjryoo@keri.re.kr)		
Electrical Functionaity Material Engineering	○	○	○
	Professor in charge : Ryoo Hong Je (055-280-1455, hjryoo@keri.re.kr)		

[note] Professor to each major

• Search through UST Homepage (<http://www.ust.ac.kr>)

[way to find : UST Homepage > Campus/Major > searching by campus or major]



13. Electronics and Telecommunications Research Institute

<http://www.etri.re.kr>
ETRI Electronics and Telecommunications Research Institute

- Admission Plan for each Major

(○: opening to admission)

Major	Program		
	Doctoral	Integrative	Master
Science and Technology Policy	○	○	○
	Professor in charge : Lee Byung Min (042-865-2306, leebm@ust.ac.kr)		
Broadband Network Technology	○	○	○
	Professor in charge : Byung Jun Ahn (042-860-5510, bjahn@etri.re.kr)		
Mobile communication & Digital Broadcasting Engineering	○	○	○
	Professor in charge : Mun- Geon Kyeong (042-860-1150, mgk@etri.re.kr)		
Information Security Engineering	○	○	○
	Professor in charge : Jang- Hee Yoo (042-860-1324, jhy@etri.re.kr)		
Information and Communications Technology Management	○	○	○
	Professor in charge : Lee Seong Koog (042-860-6068, leesg@etri.re.kr)		
Advanced Device Technology	○	○	○
	Professor in charge : Moongyu Jang (042-860-1896, jangmg@etri.re.kr)		
Computer Software	○	○	○
	Professor in charge : Pyeong Soo Mah (042-860-6559, pmah@etri.re.kr)		

[note] Professor to each major

• Search through UST Homepage (<http://www.ust.ac.kr>)

[way to find : UST Homepage > Campus/Major > searching by campus or major]

Major	Professor	Research Field	E-mail	Note
Advanced Device Technology	Do Lee Mi	Flexible electronics and materials	domi@etri.re.kr	
	Choi Choon-Gi	Meta material, Graphene electronics	cgchoi@etri.re.kr	
Computer Software	Ahn Chang Won	Big Data Analysis	ahn@etri.re.kr	

14. Korea Astronomy & Space Science Institute

<http://www.kasi.re.kr>



- Admission Plan for each Major

(○: opening to admission)

Major	Program		
	Doctoral	Integrative	Master
Astronomy and Space Science	○	○	×
	Professor in charge : Kwak, Young-Sil (042-865-2069, yskwak@kasi.re.kr)		

[note] Professor to each major

- Search through UST Homepage (<http://www.ust.ac.kr>)
[way to find : UST Homepage > Campus/Major > searching by campus or major]



15. Korea Railroad Research Institute

<http://www.krri.re.kr>



- Admission Plan for each Major

(○: opening to admission)

Major	Program		
	Doctoral	Integrative	Master
Virtual Engineering	○	○	○
	Professor in charge : Hwang Ho Young (032-850-0463, hyhwang@kitech.re.kr)		
Transportation and Logistics System & ITS Engineering	○	○	○
	Professor in charge : Hong Soon- Heum (031-460-5481, shong@krri.re.kr)		
Railway System Engineering	○	○	○
	Professor in charge : SEO, SUNG IL (031-460-5623, siseo@krri.re.kr)		

[note] Professor to each major

• Search through UST Homepage (<http://www.ust.ac.kr>)

[way to find : UST Homepage > Campus/Major > searching by campus or major]

Major	Professor	Research Field	E-mail	Note
Railway System Engineering	Lee Il Wha	Railway Track and Foundation	iwlee@krri.re.kr	
	Han Young-Jae	Railway Electrical Eng.	yjhan@krri.re.kr	
	SEO, SUNG IL	Rolling Stock	siseo@krri.re.kr	



16. Korea Institute of Oriental Medicine

<http://www.kiom.re.kr>



- Admission Plan for each Major

(○: opening to admission)

Major	Program		
	Doctoral	Integrative	Master
Korean Medicine Life Science	○	○	○
	Professor in charge : Kim, Jin Sook (042-868-9465, jskim@kiom.re.kr)		

[note] Professor to each major

- Search through UST Homepage (<http://www.ust.ac.kr>)

[way to find : UST Homepage > Campus/Major > searching by campus or major]

